

NOW MORE REASONS TO



THE QUALITY



TECHNICAL SPECIFICATIONS<sup>+</sup>

WEIGHT/MEASUREMENTS

Kerb Weight (Kg)	121
Length (mm)	2014
Width (mm)	762
Height (mm)	1071
Wheelbase (mm)	1266
Ground Clearance (mm)	175
Fuel tank Capacity (Litre)	11.0

PERFORMANCE

Acceleration (0-60 kmph)	5.3 (Sec) ^
Mileage	65 kmpl*

CHASSIS

Chassis	Advanced Design Diamond Frame
Front Suspension	Telescopic Fork
Rear Suspension	3-step Spring-loaded Hydraulic Shock Absorber
Tyre Type	Tube Type
Front Tyre	2.75-18 42P (4PR)
Rear Tyre	2.75-18 49P (6PR)
Front Brake Type	Disc 240mm dia / Drum 130mm dia
Rear Brake Type	Drum 130mm dia

ENGINE & TRANSMISSION

Engine Type	Air Cooled, 4 Stroke, SI Engine
Displacement (cc)	124.7
Net Power	10.3 bhp@7500rpm
Torque	11 kg-m@5500rpm
Air Filter	Viscous air filter
Carburetor	CV Type
Starting System	Kick/Self
Transmission	Constant Mesh, 4 Speed Gear
Gear Shift Pattern	All up

ELECTRICALS

Ignition	Digital CDI (Multi Mapping)
Battery	12V-3AH Maintenance Free
Headlamp	Halogen 12V 35/35W

**HONDA**  
The Power of Dreams

It's as if the world has just been washed.  
Everything has a sense of newness, of freshness about it.  
The road looks like it has just been laid.  
It sparkles and becomes a mirage.  
The mirage becomes an oasis.  
The sunflowers follow you.  
People on the street suddenly awaken.  
There is a squint in their eyes as their heads turn.  
You hold your head high.  
After all, you have reason to shine.  
  
The all new CB Shine. A bright future is the winner's choice.





## STYLE: Shine in all your glory



### STANDOUT GRAPHICS

The new edgy graphics of the CB Shine add to the elegance and gets glowing reviews.



### THE PRIZED 3D EMBLEM

The 3D Wing Mark Emblem on the fuel tank gives you that extra edge that winners can't do without.



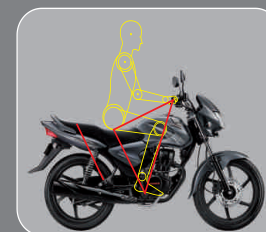
### HANDLE BAR WEIGHTS AND MIRROR DESIGN

The newly introduced Handle Bar weights give you more stability. It lets you stay in control, giving you a far smoother ride. Meanwhile, the trendy mirrors lets you check out all those you leave behind.



### VIVID BODY COLOR GRAB

The body color grab guarantees your ride a noticeable sheen.



### STRIKING ERGO-TEC DESIGN

CB Shine comes with Ergo-tec design providing easy handling and superior riding comfort based on human engineering. The light weight, advanced design diamond frame distributes load evenly to provide stability, while the 3-step spring-loaded hydraulic shockers gives it superior shock absorption capability.

## PERFORMANCE: Be a front runner



### WINNING OPTIMAX ENGINE

125cc. 10.3 bhp. 0-60 in 5.3 seconds<sup>^</sup>. Great initial & overtaking acceleration. 65 kmpl<sup>+</sup>. Its Optimax Engine has an ability to develop high torque at low rpm for a smooth ride.



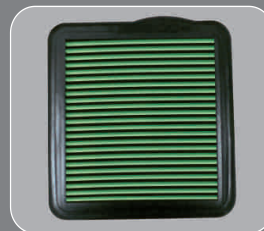
### DISC BRAKE

The Front Disc Brake option provides sure & responsive control over any road surface & enhances riding comfort.



### MAINTENANCE-FREE BATTERY

No leakages. No topping up. Now nothing can stop you from crossing the finish line first.



### VISCOUS AIR FILTER

The Viscous Air Filter helps you cut down on your maintenance costs so that nothing tarnishes your shine.



### TUFF-UP TUBE

The patented Tuff-up Tube in the rear tyre reduces the chances of punctures by 70%<sup>+</sup>. Your chances of winning go up to 100%.

## CONVENIENCE: A bright future's a ride away

**CB Shine**  
Winner's choice



Vibrant Blue Metallic



Geny Grey Metallic



Rebel Red Metallic



Black with Red Stripes



Black with Grey Stripes



1. +The technical specifications and designs of bike shown here may vary according to requirements and subject to change without any notice. 2. \*Based on Indian mode — Internal Honda riding mode based on various simulated actual riding conditions. 3. # Based on internal Honda test, however not effective in damage or L-shaped cut in the tyre. Whenever you find a foreign object nailed on the tyre, please remove it immediately and get the tube repaired at the nearest puncture shop. 4. CB Shine meets Bharat Stage III Norms. 5. ^ Achieved under Honda test conditions. 6. Accessories shown in the picture may not be part of the standard equipment. 7. Actual color of the bike may vary from the ones shown here.

Authorised Dealer Stamp

Saphire Honda  
(A Unit of H. D. A. Motors Pvt Ltd.)  
# 1320, 100 Feet Road, 1st Cross Sarakki,  
2nd Phase Extension, J. P. Nagar,  
BANGALORE - 560078

Phone No : 080-4901 8888, Hotline : + 91 8553004000

Honda Motorcycle & Scooter India Pvt. Ltd. (HMSI), Plot No. 182, Sector 3, IMT Manesar,  
Distt. Gurgaon (Haryana) 122050 Visit us at: [www.honda2wheelersindia.com](http://www.honda2wheelersindia.com). Contact us: [customercare@honda2wheelersindia.com](mailto:customercare@honda2wheelersindia.com)



2 Years Standard Warranty  
\*Extended Warranty upto 3 Years (optional)  
Other Attractive Service Packages also available