

SIMPLY CLEVER

ŠKODA



# ŠKODA Rapid







Multitasking isn't always a choice. Ask any man who's also a husband and a father. You have to be many people, in many places, all at the same time. Each day is unscripted, full of surprises that sometimes turn into challenges. Everyone wants something and they're all staring at the same guy. You. It's a job of great responsibility, but it's also the greatest joy you'll ever have.

While every dad does his best for his family, he can sometimes use a little help. So we've prepared our own toolkit for you. It's called the **ŠKODA Rapid**. A family car that doesn't look like one. Its pure, elegant contours and modern design make a bold statement. But like you, we don't appreciate beauty without brains either. So we packed in enormous room and thoughtful features that make dad's job just that bit easier. Like side pockets for your mobile phone, an ice scraper on the fuel cap or hooks in the luggage compartment to keep shopping bags upright. So you'll love the car. And your loved ones will love you for it.



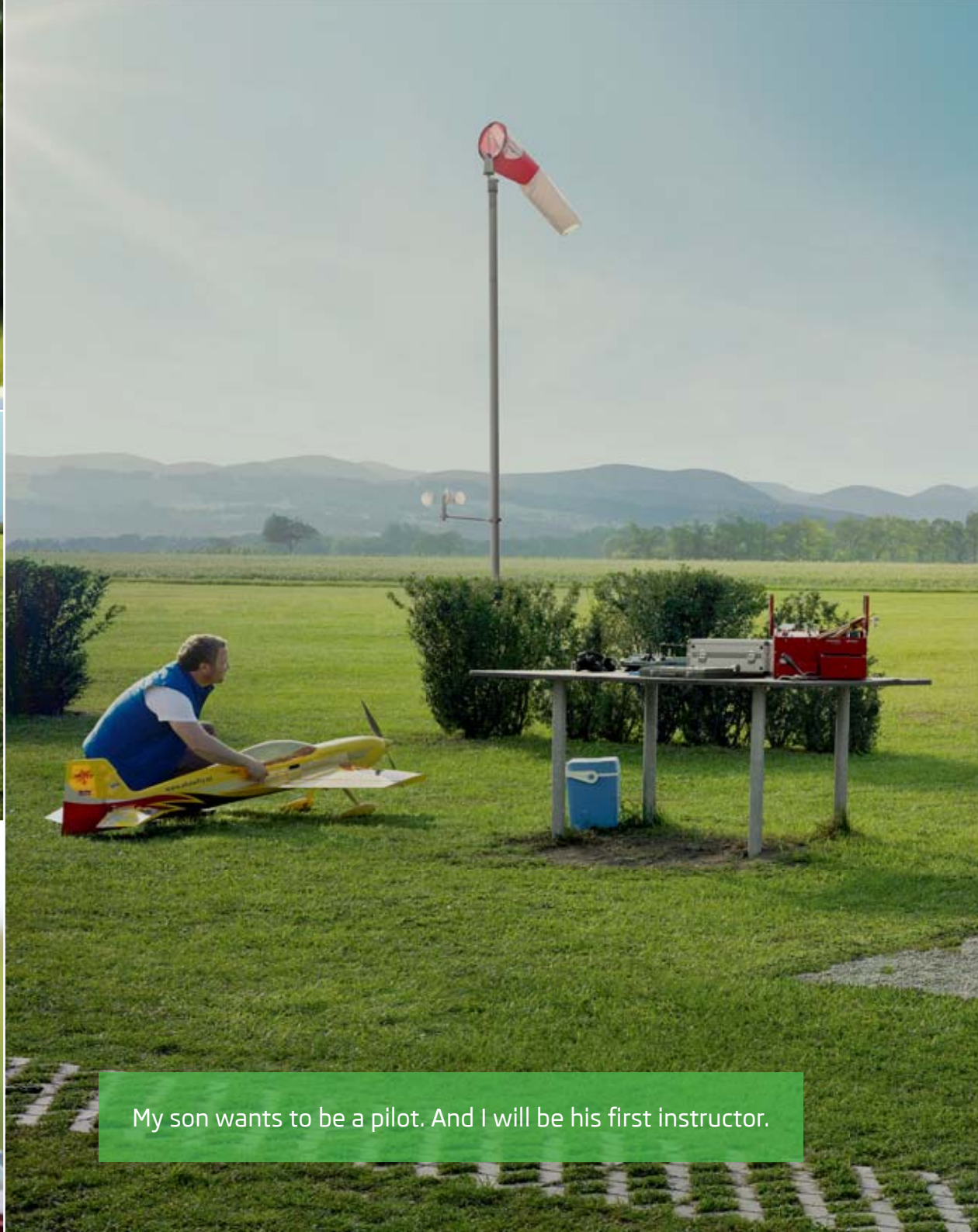
There are some things he won't learn at school.



Some journeys can make a father feel like a boy.







My son wants to be a pilot. And I will be his first instructor.







Usually I hate shopping. Usually...





Thankfully there is no holiday from being a dad.





The **design** of the Rapid will captivate you with its simplicity and precision. It represents a new design language of the ŠKODA brand that brings with it clear lines, clean surfaces and balanced proportions. The **front grille** together with the headlamps creates a design whole that visually widens the car. The **new ŠKODA logo** distinctively stands out above the chrome frame of the grille.

A characteristic feature of the new design is the sharp edges of the **headlamps and fog lamps**. The lower parts of the headlamps have angled covers reminding one of the elegance of Bohemian crystal. With regard to functionality, the top option is fog lamps featuring the Corner function and daytime running lights.



The Rapid has large and distinctive **ŠKODA lettering** in the rear. The large **rear lights**, which wrap around to the sides, illuminate the dark in the traditional ŠKODA way with the letter C.



Thanks to the black B-column, the glazed area of the side windows appears uniform and suggests a large interior space. **SunSet**, windows with a higher density of tint in the rear, underscore the elegance of the Rapid and protect rear passengers from sunshine.



When looking at the Rapid from the rear or the side you notice not only the **elegant clean surfaces and dynamically sharp lines**, but also the robustness of the car, which evokes reliability and strength. The large 5th door is a design feature that is highly functional, because it gives you excellent access to the luggage compartment. The angled surfaces cannot be overlooked and create space for the number plate.





The **dashboard**, which matches the design of the exterior with its clear and clean style, is practically arranged so the driver clearly sees everything at a glance. All the controls on the dashboard and the driver's door are within reach and placed where the driver intuitively expects them to be. The 4-spoke steering wheel comes in several versions. The top option is a **leather multifunctional steering wheel** with controls for the radio and phone as well as a decorative chrome moulding.

The **instrument panel** displays important information in the driver's field of vision. Depending on selected options, it has a tachometer and speedometer housed in chrome frames. The top version of the instrument panel is equipped with the Maxi DOT display, which not only displays data from the on-board computer (average consumption, range, etc.), but data from other car equipment, such as air conditioning and the navigation system.



You will surely not get lost in unfamiliar places with the **Amundsen+ navigation system**, which is controlled via a 5" touch-screen display. In addition to its many functions, the system can display information from the **Climatronic air conditioning** and thanks to the **MDI** (Mobile Device Interface), also from external equipment.



The **7-speed DSG** (Direct Shift Gearbox), supplied with the 1.4 TSI/90kW engine, combines the advantages of manual and conventional automatic transmissions. Its quick shifting results in excellent acceleration. When you select the optimum gear option, the DSG is able to keep the engine at optimal revolutions and, during economic driving, this results in low fuel consumption and thus lower CO<sub>2</sub> emissions.



The **Swing radio** with a dual tuner, dual antenna and CD, CD-MP3 and CD-WMA players will provide you with great listening pleasure and entertainment on long drives.



Storage compartments and "simply clever" details will make your daily use of the car more pleasant and help you keep order inside. For example, the **eyeglasses compartment** located above the interior rear-view mirror will be particularly appreciated by drivers who change sunglasses for spectacles before driving.



External appliances can be transported safely in the **multimedia bracket** located in the **dual drinks holder** on the centre console.



The **closed storage compartment** in the lower part of the dashboard by the front passenger, in cars with Climatronic air conditioning, can cool drinks during your trip.



The **parking ticket holder** is located on the driver's side at the edge of the windscreen. From now on you will not have to look for a well visible place for the parking ticket. You wouldn't find a better one.



The **front armrest**, which conceals a storage compartment for small items, increases the comfort of both the driver and front passenger. "Simply clever" details include **storage pockets** on the insides of the seat backrests, where you can store a map, mobile phone, etc.



You can create an **opening between the passenger compartment and luggage compartment** in cars with an armrest in the rear and thus easily transport longer objects in the interior.



One of the many "simply clever" features is located under the driver's seat. A special **pocket for a reflective vest** is located there, making the vest immediately within reach if you need it.



Snack wraps can be put into the **waste basket**, which can then be easily removed and emptied. The waste basket can be inserted into the storage compartments in both front and rear doors panelling. The **storage compartments in both front doors** can further hold a 1.5-litre bottle.



The **rear seat armrest** with an integrated **holder for two drinks** gives rear seat passengers the opportunity to enjoy the ride with refreshments.



Other places that the Rapid offers for storing bottles, cans or thermos during your trip are the **drinks holders** opposite the rear seats and in the **storage compartments in the rear doors**. The **pockets** in the front seat backrests are ideal for things you want to keep within reach during your trip.





You can rely on the **safety** of the Rapid even under extreme conditions. Standard equipment includes a wide range of safety features, such as the **ESC** (Electronic Stability Control) including **ABS** (Anti-lock Braking System) and **six airbags**.\* As standard are the **head airbags**, which create a wall when activated and protect passengers in the front and rear from potential head injuries.



**Front side airbags** are designed to protect the pelvis and chest of the driver and front passenger in the event of a side impact. The **front headrests** are height adjustable.



Large-volume **driver and front passenger airbags** activate in conjunction with the front seat belt pretensioners, which literally anchor you in the right place in the middle of the seat. The car can be equipped with the **deactivation of the front seat passenger airbag**, so you can place a child seat on the front seat.\*

Families that fully occupy the car will certainly appreciate the option of equipping the car with a **third headrest in the rear**, designed for the passenger in the middle seat.



\* Applies to EU countries.





Whether you are going on a big shopping spree or on a family vacation, the Rapid can handle all circumstances extremely well. It is also able to adapt to current requirements. Folding down the rear seats increases the basic **volume of the luggage compartment of 550 litres** up to a total of **1,490 litres**. If necessary, you can fold down one or two backrests and get more storage space while there remains a place for seating in the rear.

The **ice scraper** mounted on the fuel cap will be immediately within reach the moment you need it. In short, you will begin to appreciate the "simply clever" details of the Rapid model from the very first frost.



The **double-sided carpet** in the luggage compartment has fabric on one side and a washable rubber finish on the other. If necessary, you can easily turn it over and even muddy boots will not prevent you from keeping the luggage compartment clean and tidy.

The **luggage compartment cover** can sometimes interfere when loading larger objects, such as a children's bicycle. If you do not want to remove it entirely, you can put it in the folded down position and after unloading it will still be available.



The **Net Programme**, which consists of two vertical nets and one horizontal net on the floor, enables you to easily secure things so they do not shift while driving.



You can hang not only bags but also camping equipment and other things that could become damaged while driving, using the **strong hooks** in the luggage compartment. You can extend the storage options of the car with the **storage compartments** behind the rear wheel arches.





The car is equipped with the chrome package offered by ŠKODA Genuine Accessories.

At home my wife is the chef. Outside, I take the orders.





The **ISOFIX DUO plus Top Tether child seat** will ensure the maximum safety and comfort of your little passengers when travelling because, in addition to Isofix belts, it is attached using the Top Tether system on its rear side. The seat has three adjustable positions (sitting, resting and lying) and is designed for children from 9 kg up to 18 kg.



**Door sill covers**, in black, effectively protect the door sills against mechanical damage when getting in and out of the car.

You can find these products in ŠKODA Genuine Accessories. You can also find information on the complete assortment of accessories at your authorised ŠKODA partner.

The **thermo-electric cooling box** with a capacity of 15 litres enables you to primarily keep food fresh and refreshing. The cooler can keep items cool up to 20°C below the ambient outside temperature. Switching it to a thermobox gives you heating of 65°C.



Everybody who likes to keep their personal things within reach and in their place will welcome the **mobile phone and purse holder**.



The dynamic appearance of your car is highlighted with anthracite 7.0J x 17" **Ray alloy wheels** for 215/40 R17 tyres.



The **textile foot mats** offered in the Prestige version (pictured) and Standard version will help you keep the car interior clean. In addition to easy care they have outstanding durability.

We offer a 3-part **foldable snow shovel**, including a practical textile cover, for trips in search of winter pleasures. The shovel is made of alloy and weighs only 750 grams.



You can securely attach other racks and holders, such as a bicycle carrier, box for skis or snowboards, etc., onto the **basic roof rack**.



The **universal fixative element** in the luggage compartment will help you divide the floor into smaller areas according to the size of the luggage, preventing unwanted movement.



The **rubber boot mat**, which can be easily cleaned with water, will outstandingly protect upholstery from getting dirty.



The **netting programme** reliably prevents the shifting of smaller items, and you can also easily see where you put things.

The **removable boot tray** can be utilised for transporting primarily light items, which you can then quickly unload from the car using the cover.





The **Elegance** equipment version comes in two colour versions. The first has black fabric seat upholstery and the dashboard and door panelling in a Satin black/Satin black combination. The second option has beige upholstery and the dashboard and door panelling in a Satin black/Stone beige combination. The interior has many chrome elements such as trim on the steering wheel, vent frames and more.



The **Ambition** equipment version can have either black fabric seat upholstery and the dashboard and door panelling in a Satin black/Satin black combination or upholstery in a grey/black combination and the dashboard and door panelling in a Satin black/Tellur grey combination. The interior is also decorated with chrome elements such as interior door handles and more.



The **Active** equipment version always has grey/black fabric seat upholstery. The dashboard and door panelling come in either Satin black/Satin black or Satin black/Tellur grey.





The exclusive **Dynamic** interior is an option for the Elegance and Ambition equipment versions. You can choose the seat upholstery fabric in combinations of silver/black or red/black. The dashboard and door panelling always come in Satin black/Satin black. Based on the equipment level, you can adorn the interior with many chrome features.



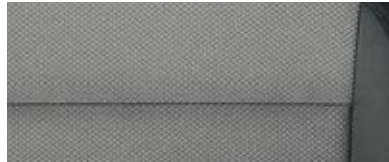
**Active interior**  
grey/black fabric



**Ambition interior**  
black fabric



**Ambition interior**  
grey/black fabric



**Elegance interior**  
black fabric



**Elegance interior**  
beige fabric



**Dynamic interior\*** – Ambition,  
Elegance silver/black fabric



**Dynamic interior\*** – Ambition, Elegance  
red/black fabric

\* Extra equipment.



7.0J x 17" **Camelot** alloy wheels  
for 215/40 R17 tyres



7.0J x 16" **Antia** alloy wheels  
for 215/45 R16 tyres



7.0J x 16" **Dione** alloy wheels  
for 215/45 R16 tyres



6.0J x 15" **Carme** alloy wheels  
for 185/60 R15 tyres



6.0J x 15" steel wheels for 185/60 R15 tyres  
with **Dakar** hub covers



5.0J x 14" steel wheels for 175/70 R14 tyres  
with **Metis** hub covers



Candy White uni



Sprint Yellow special



Corrida Red uni



Pacific Blue uni



Brilliant Silver metallic



Arctic Green metallic



Rallye Green metallic



Denim Blue metallic



Cappuccino Beige metallic



Platin Grey metallic



Lava Blue metallic



Rosso Brunello metallic



Black Magic pearl effect

Colour	Colour code	Interior		
		Black	Grey	Beige
Candy White uni	9P9P	●●	●●	●
Sprint Yellow special	F2F2	●●	●	—
Corrida Red uni	8T8T	●●	●	●
Pacific Blue uni	Z5Z5	●●	●●	●●
Brilliant Silver metallic	8E8E	●●	●●	●
Arctic Green metallic	8B8B	●●	●●	●
Rallye Green metallic	P7P7	●●	●	●
Denim Blue metallic	G0G0	●●	●●	●●
Cappuccino Beige metallic	4K4K	●●	●●	●●
Platin Grey metallic	2G2G	●●	●●	●●
Lava Blue metallic	0F0F	●●	●●	●●
Rosso Brunello metallic	X7X7	●●	●●	●●
Black Magic pearl effect	1Z1Z	●●	●●	●●

Combinations of body paint and interiors:

●● very good

● good

- combination not recommended



Technical specifications

Engine	1.2 MPI/55 kW	1.2 TSI/63 kW	1.2 TSI/77 kW	1.4 TSI/90 kW	1.6 TDI CR DPF/77 kW
	Petrol engine	Turbocharged petrol engine, high-pressure direct injection system	Turbocharged petrol engine, high-pressure direct injection system	Turbocharged petrol engine, high-pressure direct injection system	Turbocharged diesel engine, high-pressure common rail system
Cylinders/Cubic capacity (cc)	3/1,198	4/1,197	4/1,197	4/1,390	4/1,598
Max. performance/Revs (kW/min <sup>-1</sup> )	55/5,400	63/4,800	77/5,000	90/5,000	77/4,400
Max. torque/Revs (Nm/min <sup>-1</sup> )	112/3,750	160/1,500–3,500	175/1,550–4,100	200/1,500–4,000	250/1,500–2,500
Air pollution regulation	EU5	EU5	EU5	EU5	EU5
Fuel	Unleaded petrol, RON 95/91*	Unleaded petrol, RON 95/91*	Unleaded petrol, RON 95/91*	Unleaded petrol, min. RON 95	Diesel
<b>Performance</b>					
Maximum speed (km/h)	175	183	195	206	190
Acceleration 0–100 km/h (s)	13.9	11.8	10.3	9.5	10.4
Fuel consumption 99/100 (l/100 km)					
– urban	8.0/8.1**	6.5/5.9***	6.9/6.3***	7.4/6.8***	5.6/4.8***
– extra-urban	4.5/4.6**	4.4/4.3***	4.6/4.2***	4.8/4.6***	3.7/3.4***
– combined	5.8/5.9**	5.1/4.9***	5.4/5.0***	5.8/5.4***	4.4/3.9***
CO <sub>2</sub> emissions (g/km)	134/137**	119/114***	125/116***	134/125***	114/104***
Turning circle diameter (m)	10.9	10.9	10.9	10.9	10.9
<b>Power transmission</b>					
Type	Front-wheel drive	Front-wheel drive	Front-wheel drive	Front-wheel drive	Front-wheel drive
Clutch	Hydraulic single dry clutch disc	Hydraulic single dry clutch disc	Hydraulic single dry clutch disc	Twin coaxial clutch, electro-hydraulically operated	Hydraulic single dry clutch disc
Transmission	Manual 5-speed	Manual 5-speed	Manual 6-speed	Automatic 7-speed DSG	Manual 5-speed
<b>Weight</b>					
Kerb weight – in standard version with a 75kg driver (kg)	1,135	1,155	1,175	1,230	1,265
Payload – incl. a driver and extra equipment (kg)	535	535	535	535	535
Total weight (kg)	1,595	1,615	1,635	1,690	1,725
Trailer load without brakes (max. kg)	560	570	580	610	630
Trailer load with brakes – 12% (max. kg)	750	900	1,100	1,200	1,200

<b>Body</b>	5-seater, 5-door, 2-compartment
Drag coefficient C <sub>w</sub>	0.297–0.308 (according to engine version)

<b>Chassis</b>	
Front axle	McPherson suspension with lower triangular links and torsion stabiliser
Rear axle	Compound link crank-axle
Braking system	Hydraulic dual-diagonal circuit braking system vacuum assisted
– front brakes	Disc brakes with inner cooling and with single-piston floating calliper
– rear brakes	Drum brakes; alternatively disc brakes depending on the engine version
Steering	Direct rack-and-pinion steering with electro-hydraulic power steering
Wheels	5.0J x 14"; 6.0J x 15"
Tyres	175/70 R14; 185/60 R15

<b>Tank capacity (l)</b>	55
--------------------------	----

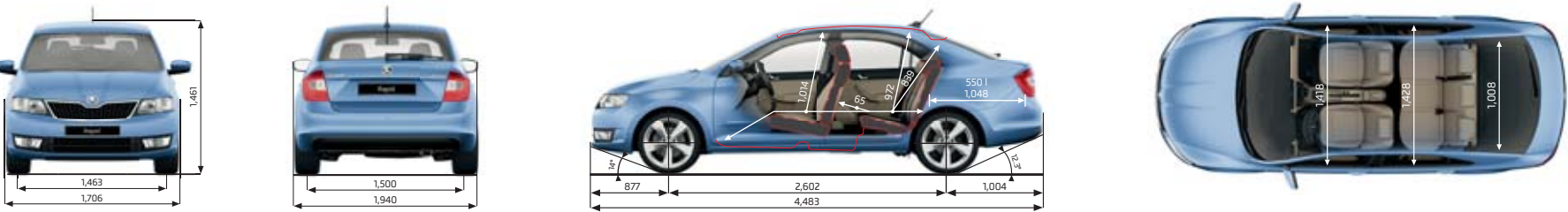
The listed values (except for values marked \*\*) apply to the standard model without extra equipment.

\* Using low-octane fuel may affect engine performance.  
\*\* At kerb weight with extra equipment exceeding 1,090 kg.

<b>Exterior dimensions</b>	
Length (mm)	4,483
Width (mm)	1,706
Height (mm)	1,461
Wheel base (mm)	2,602
Track front/rear (mm)	1,463/1,500
Clearance (mm)	143

<b>Interior dimensions</b>	
Lateral room front/rear (mm)	1,418/1,428
Effective head room front/rear (mm)	1,014/972
Luggage storage space (max. l)	
– without spare tyre, with rear seat backrests upright/down	550/1,490
– with spare tyre the values are lower by 20 l	

\*\*\* Applies to Green tec version.



Merchandising



Polo shirt with long sleeves



Outdoor chair



Key chain



Notebook

General information

ŠKODA Service

Put your car in good hands. We give you good reasons to choose an authorised ŠKODA service partner.

We offer you first-class quality

Your car requires advanced technology. For this reason, all the ŠKODA authorised service partners have special tools and quality diagnostic systems at their disposal, which, in combination with the technological procedures prescribed by the manufacturer, ensure the perfect functionality and reliability of your car.

Professionally trained staff by the manufacturer

The ever-rising standard of the technology used in the car requires corresponding professional qualifications on the part of the staff. To meet this requirement, the manufacturer organises regular training for the staff of the authorised service partners in order to provide them with up-to-date information important for their activities.

Our motto: be fair and open with our customers

Careful, professional and friendly counselling for the customers upon acceptance of orders is of great importance to us in the same manner as diligence and completeness with respect to repairs and maintenance work. All this is continuously monitored by internal quality control of the provided services.

Comprehensive range of services:

› Service inspections

For your car to remain in top condition and functional for a long time it is essential to conduct all regular service inspections in accordance with the manufacturer's instructions, which can only be guaranteed if performed by an authorised ŠKODA service partner. The service schedule informs you when the service inspection must be done.

› Body and paintwork service

Damage to the body and painted areas following an accident will be fixed by your authorised ŠKODA service partner in an expert manner, in accordance with information from the manufacturer, using ŠKODA Genuine Parts. This is important not only for your safety, but also for functionality and maintaining your car's value.

› Courtesy car

The authorised ŠKODA service partner can provide you with a courtesy car for the period of repair or service inspection.

› Pick-up and delivery service

If you are unable to take your vehicle to the ŠKODA Service, an authorised ŠKODA service partner will arrange a date with you to pick up the car. The car will be delivered back after the service work has been completed.

The listed services represent only a part of the wide range of ŠKODA Service offers, which may vary from country to country. Please contact your authorised ŠKODA service partner for further details and information on the range and specific conditions of services they offer.

ŠKODA Genuine Accessories

ŠKODA Genuine Accessories offer you child safety seats, roof rails, alloy wheels, sunblinds and more. For more detailed information on the complete ŠKODA Genuine Accessories range see the individual ŠKODA model catalogues.

ŠKODA Genuine Parts

Safety

ŠKODA Genuine Parts are identical to those used during the assembly of ŠKODA vehicles. The use of first-class materials and technologies guarantees safe and worry-free driving.

Availability

ŠKODA AUTO offers a complete range of parts and equipment items that are used in the vehicle's batch production and does not merely focus on high-turnover parts. ŠKODA ensures the provision of genuine parts even after the relevant model is discontinued, and not only for the duration of the statutory period but for at least 15 years for the essential operational parts.

Long service life

The use of first-rate materials and production technologies in the manufacture of ŠKODA Genuine Parts ensure their maximum reliability and long life. As proof, we have extended the genuine batteries warranty to three years.

Environment protection

The ŠKODA Genuine Parts range includes exchange parts whose production has a low environmental impact in terms of waste, excess heat and water contamination.

Information on the internet

Information is available at [www.skoda-auto.com](http://www.skoda-auto.com) to assist you in deciding which vehicle suits your needs, thanks to the detailed descriptions and photographs of all our models. Visit [www.facebook.com/skoda](https://www.facebook.com/skoda) and become a fan of ŠKODA to receive the latest updates and get in touch with our community.

ŠKODA Finance

ŠkoFIN offers solutions for both individuals and businesses. You can learn about the current offer through any authorised ŠKODA partner. The credit or lease contract can also be concluded directly with the car dealer.

Global fleet

The ŠKODA AUTO Global Fleet Services offer B2B fleet solutions to customers with all kinds of requirements. A fleet made up of ŠKODA cars offers unmatched roominess, long-lasting quality, safety, low total costs of ownership and, as a result, excellent value for money. You can find more information about our products and services at [www.skoda-auto.com/fleet](http://www.skoda-auto.com/fleet).



One of the most important goals of ŠKODA AUTO is the development and manufacture of products that are as environmentally friendly as possible throughout their life cycle phases, placing principal emphasis on the selection of recyclable materials. Our ŠKODA cars are produced using progressive types of technology in modern production facilities that meet the strictest criteria. Anticorrosive protection of the cars' painted parts is based exclusively on lead-free cathaphoresis (KTL) and water-soluble paints.

Our company strategy includes limiting fuel consumption and emissions. As a result, the engines we offer meet the current emission regulations. All ŠKODA products are made using manufacturing processes that adhere to the laws and regulations concerning the protection of soil and water. As a result of these activities, ŠKODA cars meet technical, safety, quality and environmental requirements. ŠKODA AUTO contributes to the preservation of a clean environment and provides mobility and comfort to its customers.


The environmental logo expresses ŠKODA AUTO's awareness of, responsibility for and attempts at the sustainable development of the company and a friendly approach to life and nature.



Download the Rapid  
Interactive Catalogue for free.

Some models in this catalogue are shown fitted with optional or extra equipment not necessarily included in the standard equipment. All details of technical specifications, design, equipment, materials, guarantees and appearance were accurate at the time of going to print. However, the manufacturer reserves the right to make any changes without prior notice. The information included in this catalogue is for guidance only. Due to printing technology limitations, the colours of paints or other materials shown in this catalogue may differ from reality. For up-to-date information and further details on standard and optional equipment, current prices and delivery terms and conditions contact your authorised ŠKODA partner. This catalogue was printed on cellulose paper which was bleached without using chlorine. The paper is 100% recyclable.

[www.skoda-auto.com](http://www.skoda-auto.com)

 [facebook.com/skoda](https://facebook.com/skoda)

Your ŠKODA partner:

R10220 10/12