

# SKODA | Slavia



**India's Safest Family Sedan**

**3** Year

Standard Warranty\*\*  
Roadside Assistance

**1** Year

SuperCare  
package



Introduction

Exterior Design

Light Design

Interior Design

Performance

Safety

Storage & Utility

Slavia Monte Carlo

Slavia Sportline

Wheels & Upholstery

Colours & Special Editions

Technical Specifications



# An Ode to **Unexplored Roads**

Škoda Slavia is a masterpiece derived from Škoda's rich legacy of crafting the world's finest sedans. Beyond the sleek contours and bold design, it carries the essence of exploration and style in every inch. We invite you to begin your exploration journey in utmost comfort and luxury - Let's Drive, Let's Explore.



## Exterior Design

Effortlessly blending classic charm with contemporary design language.  
Turn heads everywhere you go with the stylish Škoda Slavia.



## Front View

Škoda Slavia leaves an indelible mark with its captivating design. The Hexagonal Grille with Chrome Surround and Crystalline LED Headlamps with L-Shaped DRLs ensure it stands out, even on the busiest of streets.



## Top View

Let in a little fresh air as you take a spin in your Škoda Slavia. The Electric Sunroof with Anti-Pinch Technology makes every journey memorable.



## Rear View

Škoda Slavia's rear embodies modern sedan finesse with features like the Crystalline Split LED Tail Lamps, chrome highlights, and a tapered sporty coupé form.



## Light Design

Enjoy exploration even after dark with the stylish Auto LED Headlamps.

# Enhance Your Exploration with Light Design



## Škoda Crystalline LED Headlamps with L-Shaped DRLs

The state-of-the-art headlamps are engineered with dependable fog lights to enhance visibility in rough weather. With Škoda Slavia's sleek DRLs amplifying the car's dynamic road presence, exploration remains uninterrupted.

## Škoda Crystalline Split LED Tail Lamps

Inspired by Czech heritage, the tail lamps shine with dynamic LED lights, and their sleek, contemporary design positions Škoda Slavia at the pinnacle of style.





# Interior Design

Elevate automotive aesthetics with the exquisite Stone Beige & Piano Black Luxe Interiors. Enhanced by a 20.32cm Virtual Cockpit, complemented with chrome accents and ambient lighting, every moment of your journey exudes unmatched style and sophistication.



# Comfort and Convenience

Features tailored to your needs, a tech-savvy world of comfort awaits as you set out on an exploration in this stylish sedan.



## Electric Sunroof with Anti-pinch Technology

The sunroof opens up for you to enjoy sunlight, fresh air and elevated views.



## Chrome Bezel Air Vents

Inspired by the metallic ring around the dial of a watch, the side air conditioning vents are adorned with magnificent chrome trims that stand out on the dashboard.



## Ambient Lighting

Set the vibe with ambient lighting and take your drive to the next level.



## All Weather Comfort

Škoda's commitment to comfort is evident in the ventilated black leatherette seats upfront, featuring a tasteful beige perforated design that guarantees optimal comfort in every weather condition.



## Footwell Illumination

Experience a new level of luxury in your car with our glowing Footwell Illumination.



## Electric Seats for Driver & Co-driver

Immerse yourself in ultimate comfort and luxury with our revolutionary 'first-in-segment' electric front seats.



# Infotainment, Cockpit, Connectivity

## One Touch, Limitless Experiences

Experience a hassle-free journey filled with endless entertainment and integrated features, all at your fingertips.



## 25.4cm Škoda Infotainment System

25.4 cm Infotainment System with ŠKODA Play Apps

## 20.32cm Škoda Virtual Cockpit

The virtual display behind the steering wheel features information like speed, distance travelled, service interval, average fuel consumption, and much more.





The inbuilt connectivity mobile online services can be accessed at any time via the MyŠKODA ConnectED app. The app displays a clearly laid out Vehicle Health Report on the smartphone. The system automatically stores important data every time the ignition is switched off. Remote vehicle access is also available, which allows owners to retrieve vehicle information and driving data, including the car's parking location.



### Track Your Car

Keep an eye on your car's location from your home or office and stay informed when someone is driving your car.

### Real-time Speed Tracking

Monitor the real-time driving speed.

### Geofence Breach Notification

Add a geofence for your car and get alerts when the boundary is breached.

### Roadside Assistance

Get roadside services like flat tyre repair, battery jump-start, refuelling, towing and a lot more.

### Device Tampering Alert

Stay alert with prompt notifications on Device Tampering.

### Driving Behaviour

Get real-time information on driving behaviour, e.g., harsh braking, sharp turns, overspeeding and rapid acceleration.

### Walk To Car

Locate your car quickly in big parking lots or crowded areas.

### Route Tracking/Deviation Alert

Live track the travel route taken by your family and get quick deviation alerts.

### SOS (Emergency SMS with Location)

Long press the SOS button to send an emergency SMS to your contacts with your location.

### Tow Alert

Get an alert in case your car is being towed away.



## Performance

Experience the thrilling fusion of raw power and efficiency. Our advanced 1.5L 110 kW (150 PS) TSI engine, equipped with Active Cylinder Technology (ACT), ensures unwavering performance. This powerhouse retains its eco-friendly edge with Start & Stop Recuperation (SSR) technology, setting a new standard for dynamic driving.



Škoda Slavia has 2 engine variants (1.0 TSI and 1.5 TSI) with 2 gearbox variants each. All variants have SSR and deliver efficiency with dynamism.

### Manual Transmission

Car comes equipped with 1.0 TSI 6-Speed Manual Transmission.



### Automatic Transmission

Depending on the variant of your choice, the car comes equipped with 1.0 TSI 6-speed AT and 1.5 TSI 7-speed DSG.



Both engine variants of Škoda Slavia offer excellent transmission options for you to choose from.

### 1.0 TSI (Turbo Stratified Injection) Engine:

The 1.0 TSI engine, with 85 kW (115 PS) and 178 Nm torque, is powerful yet efficient. It is available in both manual and automatic transmissions.



### 1.5 TSI (Turbo Stratified Injection) Engine:

Škoda Slavia's 1.5 TSI engine with Active Cylinder Technology (ACT) churns out 110 kW (150 PS) and 250 Nm torque which ensure exceptional acceleration for sporty drives. It is available in automatic transmissions.



GLOBAL  NCAP



Family Cars with Ultimate Safety

# Safety

Škoda Slavia is a safety marvel armed with 6 airbags, Anti-Theft Alarm, Electronic Stability Control (ESC), Traction Control System (TCS), Multi-collision Braking and a range of advanced safety technologies, ensuring a secure journey regardless of your destination.



## High Strength Steel Frames

Škoda Slavia has secured its position as India's safest family sedan with its robust, high-strength steel body that effectively absorbs kinetic energy, by minimizing the impact of any accident. Seamlessly integrated restraint systems like seat belts and airbags provide unbeatable on-the-go safety. Its marvelous design and engineering represent the epitome of safety, as evidenced by its 5-star Global NCAP rating for child and adult safety.

## Driver And Passenger Front Airbags

In case of an accident, the driver's airbag in the steering wheel and the passenger's airbag in the dashboard are always ready to protect you & your loved ones.

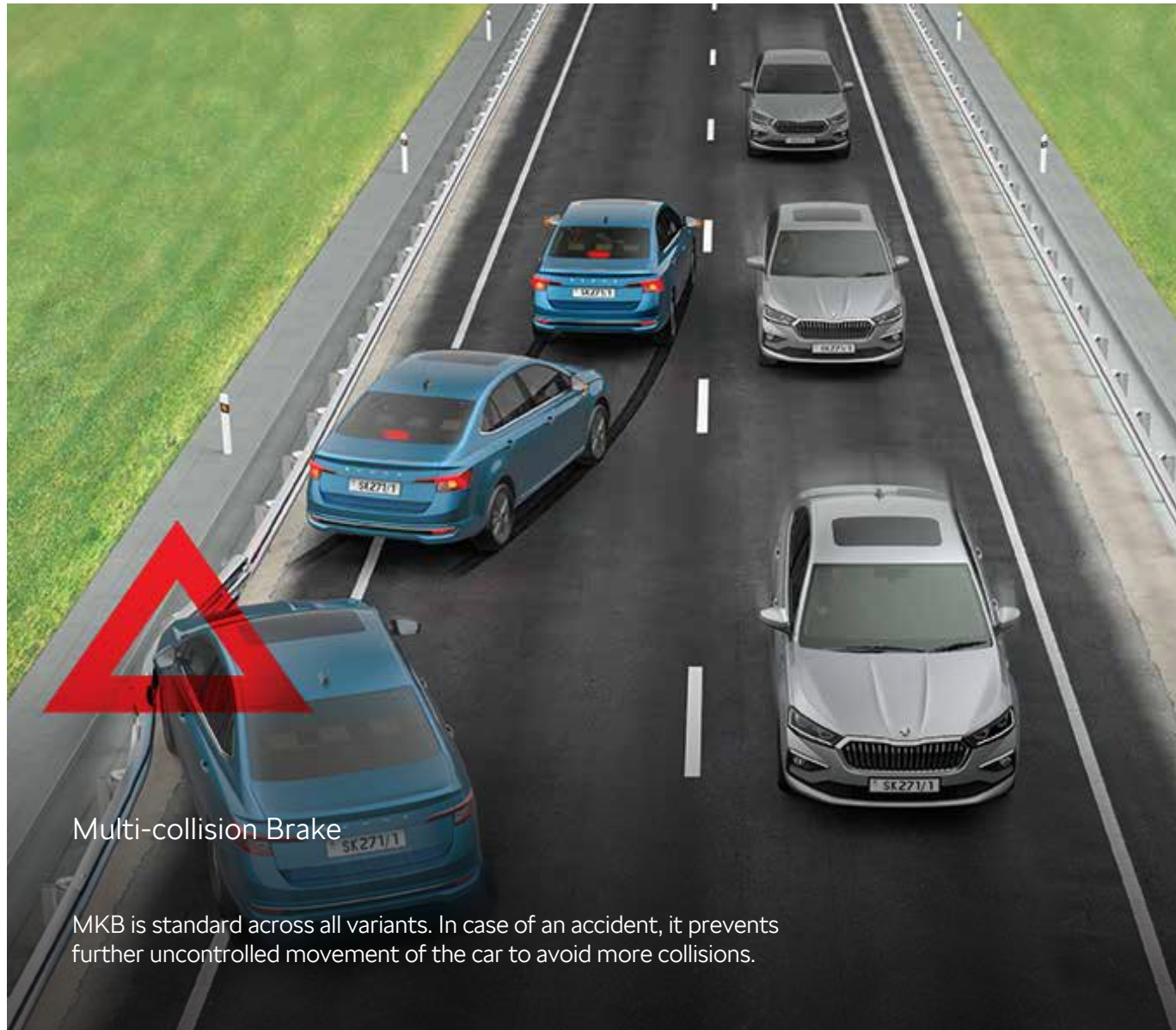
## Front Side Airbags

These airbags protect the pelvis and chest of the driver and passengers in case of a side collision.

## Curtain Airbags

These airbags shield the driver and passengers against head injury in the event of a side collision.





### Multi-collision Brake

MKB is standard across all variants. In case of an accident, it prevents further uncontrolled movement of the car to avoid more collisions.

### Anti-lock Braking System

ABS helps maintain control of the vehicle during emergency braking. An ABS intervention is noticeable from the pulsating movements of the brake pedal. This feature is standard across all variants.

### Electronic Differential Locking System

Standard EDS ensures stability on diverse road surfaces, while XDS+ helps cornering by braking inner wheels, effective up to 30km/h.

### Motor Slip Regulation

MSR ensures control by increasing engine speed if the driven axle wheels lock during sudden speed reductions, thus preventing wheel slip. Standard across all variants.

### Park Distance Control

Park in small spaces with ease. This system is standard across all variants and helps you factor in nearby objects to help you park safely.

### Anti-theft Alarm

This function, which is standard across all variants, detects vibrations to identify invalid access to the vehicle and immediately sends you an SMS in case of an attempted breach.

### Traction Control System

TCS/ASR, which is standard across all variants, helps stabilize the vehicle when driving on low-grip roads. It reduces the drive power transmitted to the wheels when they spin.

### Brake Disc Wiping

The BDW feature enhances safety while driving in the rain by removing excess water from the brake to maintain a short braking distance. This feature is standard across all variants.



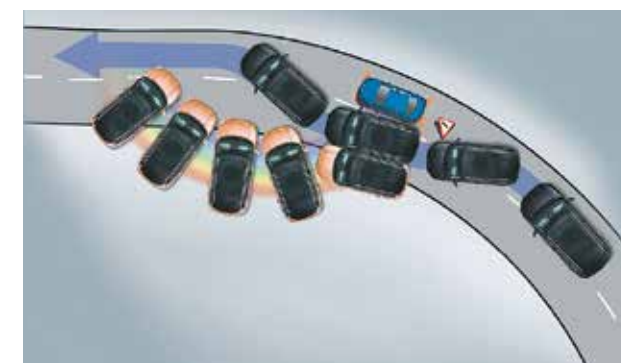
### Hill Hold Control

Conquer gradients with HHC that allows a safe start uphill without using the parking brake.



### Tyre Pressure Monitoring System

Avoid unnecessary pitstops by keeping tabs on your tyres. This feature, which is standard across all variants, detects and alerts the driver to a drop in pressure in any of the 4 tyres.



### Electronic Stability Control

Stay on course even in tricky situations. ESC helps to maintain directional stability and tyre traction during understeer and oversteer. This feature is standard across all variants.



## Storage and Utility

Škoda Slavia offers you more than just space. It has plenty of thoughtfully crafted storage options for all your travel essentials.



Storage In Front And Rear Doors



Cupholders In The Armrest



Storage In Front Centre Armrest



Cooled Glove Box

## Luggage Capacity

Never compromise on boot space. Škoda Slavia sets the standard with best-in-segment storage – 521 liters with rear seats up, and a whopping 1050 liters when folded down.



Driver Storage Compartment



#### Smartphone Pocket

This thoughtful feature for the rear passengers allows them to store their smartphones safely.



#### Reflective Safety Tape On All Four Doors

Open your door safely by staying visible to other drivers even in low light conditions.



#### Smart Grip Bottle Holder

Designed to hold your beverages firmly in place, this feature even allows you to open your bottle with one hand.



#### Smartclip Ticket Holder

Placed right at the side of the windshield, the SmartClip Ticket Holder ensures that the required tickets are displayed without hassles.



#### Utility Recess On the Dashboard

The additional space carved out on the dashboard adds an aesthetic touch to the interior design.



#### Two USB-C Sockets in the Rear

Passengers in the rear seats can easily charge their devices with two USB-C sockets.



#### Coat Hooks

The coat hooks on the rear roof handles help you keep your outfits handy without damaging them.



### 2-spoke Multi-functional Steering Wheel With Chrome Scrollers

The multi-functional steering wheel offers hassle-free audio control with stylish chrome scrollers and adjustable positioning for driver comfort.



### Climatronic Air Conditioning with Aircare Function

Climatronic automatic air conditioning maximizes cabin comfort for everyone.



### Kessy

The Keyless Entry Start & Stop System enables convenient locking and unlocking of the car.



### Cruise Control

In addition to maintaining the preselected speed, cruise control enables you to increase or reduce speed without using pedals.



### Wireless Charging

Charge your phone wirelessly while driving (only on selected phones).



### 12V Power Socket In Front Central Console

The power socket in the front central console helps you power devices on the go.



### Adjustable Rear A/C Vents

The adjustable rear A/C vents ensure comfort for the rear passengers in the car.



### Rear View Camera with Static Guidelines

Reverse and park safely with a rear camera.

# All-New Slavia Monte Carlo



» R16 Black Alloy Wheels



» Darkened Tail Lamps



» Exclusive  
Monte Carlo Badging



» Glossy Black ORVMs



»» 20.32cm Škoda Virtual Cockpit with Red Theme



»» Dual Tone  
Electric Sunroof



»» Monte Carlo Inscribed  
Ventilated Front  
Leatherette Seats



»» Black Škoda Signature Grill



»» Sporty Black  
Exterior Package



# All-New Slavia Sportline



» R16 Black Alloy Wheels



» Black Škoda Signature Grill



»» LED Headlamps with DRLs



»» Darkened Tail Lamps



»» Dual Tone  
Roof with  
Electric  
Sunroof



»» Sporty Black  
Exterior  
Package



# Wheels



## Classic

R15 Steel Wheels With  
Carme Wheel Cover



## Signature

R16 Lynx Alloy Wheels



## Prestige

R16 Ving Alloy Wheels



## Sportline/ Monte Carlo

R16 Black Ving Alloy Wheels

# Upholstery



## Classic

Black Fabric Melange Woven Seats



## Signature/ Sportline

Black Fabric Steps Woven Seats



## Prestige

Ventilated Black Leatherette Front Seats With  
Perforated Beige Design



## Monte Carlo

Monte Carlo Inscribed Ventilated Front  
Leatherette Seats

# Colours



Lava Blue



Tornado Red



Carbon Steel



Brilliant Silver



Candy White

\*Available on select variant only



Deep Black



## Monte Carlo



## Sportline



Candy White



Brilliant Silver



Tornado Red



Carbon Steel



Lava Blue



Deep Black



Carbon Steel  
Matte



Tornado Red  
Dual Tone



Candy White  
Dual Tone



Brilliant Silver  
Dual Tone



Lava Blue  
Dual Tone



 **Upper Circle** represents the roof colour  
 **Lower Circle** represents the body colour

# Technical Specifications

Technical Description	1.0 TSI/85 kW		1.5 TSI/110 kW
Engine	MT	AT	DSG
Engine type	1.0 TSI Petrol , in-line, 4 Stroke Positive Ignition Direct Injection Engine		1.5 TSI Petrol , in-line, 4 Stroke Positive Ignition Direct Injection Engine with Active Cylinder Technology
Clutch	Dry Single Plate	Hydro Dynamic Torque Converter	Dry Double Clutch
Cylinders	3		4
Displacement [cm³]	999		1498
Max. power/revs [kWat rpm]	85/ 5000-5500		110 / 5000-6000
Max. torque/revs [Nm at rpm]	178 / 1750-4500		250 / 1600-3500
Fuel consumption - rule 115 of CMVR [kmpl]	20.32	18.73	19.36
Transmission			
Wheel drive	Front Wheel Drive		
Transmission	6 Speed	6 Speed	7 Speed
Chassis			
Front axle	McPherson suspension with lower triangular links and stabiliser bar		
Rear axle	Twist Beam Axle		
Braking system	Hydraulic Diagonal Split Vaccum Assisted Braking System		
Brake – front	Disc		
Brake – rear	Drum		
Steering system	Electro-Mechanical Steering (Power Assisted)		
Wheels	Steel wheel 6J x 15" (Classic), Alloy wheel 6J x 16" (Signature/Sportline/Prestige/Monte Carlo)		
Tyres	195/65 R15-Classic, 205/55 R16-Signature/Sportline/Prestige/Monte Carlo		
Outside dimensions			
Length [mm]	4 541		
Width [mm]	1 752		
Height [mm]	1 507		
Wheel base [mm]	2 651		
Ground clearance (Laden condition) [mm]	145		
Inside dimensions			
Storage capacity [l]	521/1 050		
Weights			
Kerb weight [kg]	1 170-1 220	1 217-1 256	1 245-1 281
Gross weight [kg]	1 630	1 660	1 685
Liquids			
Tank capacity [l]	45		

Engine & Trim	Classic	Signature	Sportline	Monte Carlo	Prestige
1.0 TSI/85kW (115PS)	MT	MT/AT	MT/AT	MT/AT	MT/AT
1.5 TSI/110kW (150PS)	-	-	DSG	DSG	DSG
<b>Design</b>					
<b>Wheels</b>					
Steel wheels R(15) + full wheel cover, Carme	■	-	-	-	-
Alloy wheels R(16), Lynx	-	■	-	-	-
Alloy wheels R(16), Ving	-	-	-	-	■
Alloy wheels R(16), Ving Black	-	-	■	■	-
Spare Wheel R(15)	■	■	■	-	-
Spare Wheel R(16)	-	-	-	■	■
<b>Exterior Décors</b>					
Door handles in body colour without chrome accents	■	-	-	-	-
Door handles in body colour with chrome accents	-	■	-		■
Door handles in body colour with Dark chrome accents	-	-	■	■	-
Škoda Piano Black Fender Garnish with Chrome outline	■	■	■	-	■
Monte Carlo Fender Garnish	-	-	-	■	-
Škoda Hexagonal Grille with Chrome Surround	■	■	-	-	■
Škoda Hexagonal Grille with Glossy Black Surround	-	-	■	■	-
Window Chrome Garnish	-	-	-	-	■
Window Chrome Garnish Black	-	-	■	■	-
Lower Rear Bumper Chrome Garnish	-	-	-	-	■
Lower Rear Bumper Black Garnish	-	-	■	■	-
Front Fog lamp Chrome Garnish	-	■	-	-	■
Front Fog lamp Black Garnish	-	-	■	■	-
Lower Rear Bumper Reflectors	■	■	■	■	■
Glossy Black Tailgate Spoiler	-	-	■	■	-
Glossy Black Rear Diffuser	-	-	■	■	-
Glossy Black Front Spoilers	-	-	■	■	-
Glossy Black Side Spoilers	-	-	■	■	-
Black Trunk Garnish	-	-	■	■	-
Glossy Black Door Lower Garnish	-	-	■	-	-

Equipment	Classic	Signature	Sportline	Monte Carlo	Prestige
<b>Exterior Colour Coding</b>					
Manually foldable external mirrors - Body Coloured	■	-	-	-	-
Electrically foldable external mirrors - Body Coloured	-	■	-	-	■
Electrically foldable external mirrors - Glossy Black	-	-	■	■	-
Electrically Adjustable external mirror	■	■	■	■	■
Matte Black Plastic cover on B-Pillar	■	■	-	-	-
Glossy Black Plastic cover on B-Pillar	-	-	■	■	■
Glossy Black Škoda Lettering	-	-	■	■	-
Glossy Black Trunk Garnish	-	-	■	■	-
Deep Black Painted Roof	-	-	■	■	-
<b>Interior Décor and Colours</b>					
Dashboard with Grained & Piano Black décor insert	■	-	-	-	-
Dashboard with Piano Black & Silver décor insert	-	■	■	-	-
Dashboard with Piano Black & Glazed décor inser	-	-	-	-	■
Dashboard with Piano Black interior Décor with Red Metallic insert	-	-	-	■	-
Instrument Cluster Housing with Škoda inscription	■	■	■	■	■
Black interior door handles	■	-	-	-	-
Chrome décor on interior door handles	-	■	■	■	■
Chrome ring on gear shift knob	■	■	■	■	■
Chrome insert under gear shift knob	-	-	-	■	■
Black Plastic handbrake with Glossy Black handle button	■	■	■	-	-
Black Plastic handbrake with Chrome handle button	-	-	-	■	■
Beige Middle Console	■	■	■	-	-
Dual tone Black & Beige Middle Console	-	-			■
Black Middle Console	-	-	-	■	-
Glossy Black surround on side air conditioning vents	■	-	-	-	-
Chrome Bezel Air conditioning vents	-	■	■	■	■
Chrome Air conditioning duct sliders	■	■	■	■	■
Monte Carlo Inscribed Front Scuff plates	-	-	-	■	-
Front Scuff plates with Slavia inscription	-	-	■	-	-
Sporty Alu Pedals	-	-	■	■	-

Equipment	Classic	Signature	Sportline	Monte Carlo	Prestige
Safety					
Illumination					
Škoda Crystalline Halogen Headlamps with LED Day time running lights	■	-	-	-	-
Škoda Crystalline LED Headlamps with 'L' Shaped Day time Running Lights	-	■	■	■	■
Škoda Crystalline LED Tail lamps with Reflective lamp	■	-	-	-	-
Škoda Crystalline Split LED Tail lamps	-	■	-	-	■
Škoda Crystalline Split LED Darkened Tail lamps	-	-	■	■	-
Front fog lamps	-	■	■	■	■
Light Assistant Auto Headlamps	-	-	-	■	■
Manual coming /leaving home lights	■	■	■	-	-
Automatic coming /leaving home lights	-	-	-	■	■
LED Reading Lamps - Front & Rear	■	■	■	■	■
Ambient Interior lighting - Dashboard & Door Handles	-	■	■	■	■
Footwell Illumination	-	-	-	■	■
Rear LED Number Plate Illumination	■	■	■	■	■
Boot Illumination	■	■	■	■	■
Visibility					
Anti-glare outside rear view mirror	■	■	■	■	■
Automatic front wiper system with rain sensor	-	■	■	■	■
Rear Defogger	■	■	■	■	■
Auto dimming interior rear view mirror	-	■	■	■	■
Braking & Stabilizing Systems					
ESC (Electronic Stability control), ABS (Antilock Braking System) & EBD	■	■	■	■	■
MKB (Multi Collision Braking)	■	■	■	■	■
EDS (Electronic Differential Lock System), XDS & XDS+ (Over 30 Km/h)	■	■	■	■	■
TCS (Traction Control System), MSR (Motor Slip Regulation)	■	■	■	■	■
BDW (Brake Disc Wiping)	■	■	■	■	■
HHC (Hill Hold Control)	-	■	■	■	■
Airbags					
Driver & Passenger front airbag	■	■	■	■	■
Curtain Airbags	■	■	■	■	■
Front Side Airbags	■	■	■	■	■

Equipment	Classic	Signature	Sportline	Monte Carlo	Prestige
Occupant Restraint					
Three-point seatbelts at front with Pretensioner	■	■	■	■	■
Three-point rear outer and centre seatbelt	■	■	■	■	■
Height adjustable head restraints at Front & Rear	■	■	■	■	■
Front Seat Belt Reminder	■	■	■	■	■
More					
TPMS (Tyre pressure monitoring system)	■	■	■	■	■
Child-proof rear door locking	■	■	■	■	■
Child-proof rear window locking	■	■	■	■	■
ISOFIX & Top tether points on Rear Seats	■	■	■	■	■
Door open indicator	■	■	■	■	■
Emergency triangle in luggage compartment	■	■	■	■	■
Dual-tone warning horn	-	■	■	■	■
Security					
Electronic Theft Deterrence					
Engine immobilizer with floating code system	■	■	■	■	■
Anti-Theft Alarm	■	■	■	■	■
Remote Operation					
Central door locking with speed sensor	■	■	■	■	■
KESY (Engine Start/Stop & Locking/Unlocking of Door)	-	■	■	■	■
Remote control with foldable key	■	■	■	■	■
Central locking and unlocking of doors and boot lid	■	■	■	■	■
Comfort					
Seats					
Rear seats split 60:40 foldable with center armrest	-	■	■	■	■
Manual Height Adjustment for Driver seat	■	■	■	-	-
Electric Driver and Co-Driver Seats	-	-	-	■	■
Front centre armrest with storage	-	■	■	■	■
Upholstery					
Black Fabric Melange Woven seats	■	-	-	-	-

Equipment	Classic	Signature	Sportline	Monte Carlo	Prestige
Black Fabric Steps Woven seats	-	■	■	-	-
Ventilated Black Leatherette Front seats with perforated beige design	-	-	-	-	■
Ventilated Red & Black Leatherette Front seats with perforated design with Monte Carlo Embossing on Front Headrests	-		-	■	-
Black leatherette rear seats with perforated beige design	-	-	-	-	■
Red and Black Rear Leatherette seats with Monte Carlo Embossing on Two Rear Headrests	-	-	-	■	-
<b>Additional Upholstery</b>					
Front & Rear Door armrest with cushioned fabric upholstery	■	■	■	-	-
Front & Rear Door armrest with cushioned leatherette upholstery	-	-	-	■	■
Front Door armrest with Red Stitching	-	-	-	■	-
<b>Steering Wheel</b>					
2-Spoke Multifunctional Steering wheel (PU) with chrome scroller	■	-	-	-	-
2-Spoke Multifunctional Steering wheel (Leather) with chrome insert & scroller	-	■	■	■	■
Height & Length adjustable steering wheel	■	■	■	■	■
Paddle Shifters	-	■ (AT only)	■ (AT only)	■ (AT only)	■ (AT only)
<b>Infotainment &amp; Connectivity</b>					
17.7cm Škoda Infotainment System	■	-	-	-	-
Wired Smartlink - Apple Carplay & Android Auto via USB	■	-	-	-	-
25.4 cm Infotainment System with Škoda Play Apps	-	■	■	-	■
25.4 cm Infotainment System with ŠKODA Play Apps & Red theme	-	-	-	■	-
Wireless Smartlink-Apple Carplay & Android Auto	-	■	■	■	■
4 Front Speakers (2x Tweeter, 2x Speaker) - 100W	■	-	-	-	-
8 Speakers (Front 2x Tweeter, 2x Speaker & Rear 2x Tweeter, 2x Speaker) - 200W	-	■	■	-	-
Škoda Sound System with 8 High Performance Speakers & Subwoofer - 380 W	-	-	-	■	■
Inbuilt Connectivity	■	■	■	■	■

Equipment	Classic	Signature	Sportline	Monte Carlo	Prestige
<b>Climate Control</b>					
Manual A/C	■	-	-	-	-
Climatronic - Auto A/C with control touch panel & Air Care function	-	■	■	■	■
Adjustable dual rear A/C vents	-	■	■	■	■
<b>Sunroof</b>					
Electric Sunroof with Anti-Pinch Technology		■	■	■	■
<b>Windows</b>					
Power Windows Front & Rear, 4x Control on Driver Side	■	■	■	■	■
One-touch automatic operation (Driver Side)	-	■	■	■	■
Bounce-back system (Driver Side)	-	■	■	■	■
<b>Convenience</b>					
<b>Information Display</b>					
2 dials global MFA (Gearshift indicator, multifunctional segment display Basic)	■	-	-	-	-
4 dials medium MFA with 3.5" TFT display MAXIDOT (Gearshift indicator, multifunctional segment display Basic Travelling time, Distance travelled, Average speed, Immediate consumption, Average consumption, Travel distance before refueling, Service Interval, Outside temperature, Clock)	-	■	■	-	-
20.32cm Škoda Virtual Cockpit	-	-	-	-	■
20.32cm Škoda Virtual Cockpit with Red Theme	-	-	-	■	-
<b>Electronic Driving Assistance</b>					
Cruise Control	-	■	■	■	■
Rear view camera - with static guidelines	-	■	■	■	■
Parktronic Sensors at rear	■	■	■	■	■
<b>More</b>					
Start & Stop function with Recuperation	■	■	■	■	■
12V power socket in front centre console	■	■	■	■	■
2 x USB-C Type socket in front (Data & Charging)	-	■	■	■	■
Wireless Charging (With Selected Smartphones)	-	-	-	■	■

Equipment	Classic	Signature	Sportline	Monte Carlo	Prestige
Front sun visors with vanity mirror on co-driver side	■	■	■	■	■
Sharkfin antenna	-	■	■	■	■
Four Foldable roof grab handles	■	■	■	■	■
<b>Storage</b>					
521 litres Boot space	■	■	■	■	■
Storage compartment in the front and rear doors	■	■	■	■	■
Driver Storage compartment	■	■	■	■	■
Bottle holders in the front & Rear doors	■	■	■	■	■
Cup holders - Center Rear Armrest	-	■	■	■	■
Storage compartment in the front centre console & centre armrest	-	■	■	■	■
Cooled Glove Box	-	■	■	■	■
<b>Advanced Features</b>					
Smart Phone Pocket (Driver & Co-Driver)	-	■	■	■	■
SmartClip ticket holder	■	■	■	■	■
Two USB-C socket in rear (Charging)	-	■	■	■	■
Coat hook on rear roof handles	■	■	■	■	■
Utility Recess on the Dashboard	■	■	■	■	■
Reflective Tape on all four Doors	■	■	■	■	■
Smart Grip Mat for one hand bottle operation	■	■	■	■	■

**Legend**

- Equipment available on the marked trimline
- Equipment not available on the marked trimline

# SKODA

[www.skoda-auto.co.in](http://www.skoda-auto.co.in) | ☎ Toll-free 18 00 27 00 260

Dealer:

Specifications given differ from model to model. As a part of continuous product development, Škoda always upgrades its model range with innovative features. Such features are only available in the vehicles manufactured after a particular date. Please verify the feature list with our authorised dealer. Accessories shown may not be part of standard equipment. Always insist on genuine Škoda Auto parts and accessories available at authorised sales and service centres. Information relating to colours, prices, construction, technical details and equipment was valid at the time of issuance and these are subject to changes without any prior notice. All disputes are subject to the courts in Mumbai jurisdiction only. Terms and conditions apply. The features mentioned in the catalogue(brochure) are of Prestige variant. Some images are created using computer graphics for the sole purpose of advertising. The variants Active, Ambition and Style have been renamed to Classic, Signature and Prestige respectively. Onyx and Sportline are upgraded versions of 'Classic' and 'Signature' variants built with some additional features as compared to regular Classic and Signature variant, respectively. Car registration will be as per the Homologation documents. The updated Standard Warranty Terms & Conditions, including 3 years/100 000 KM (whichever is earlier), 3 years Roadside Assistance (RSA), and a 1-year SuperCare Package, are applicable to vehicles sold from 1st March 2025 onwards. Terms & Conditions apply