

# INTRODUCING THE BRAND NEW LIVA

DESIGNED STYLISH. BUILT SAFE.



THE NEW **ETIOS**  
**Liva**

# STYLED TO IMPRESS

The new Liva arrives with an attractive new exterior design, plus a host of features, including a bold new front grille, a cool new Optitron display, and a whole lot more.







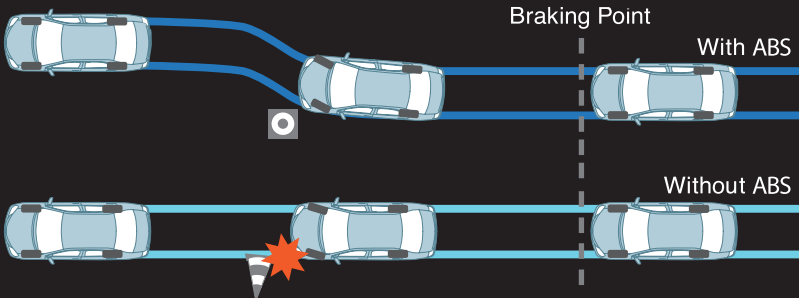
**NEW ISOFIX CHILD SEAT LOCK\***

Meets international safety standards with a secure, easy-to-fix design for child safety. Available in all variants.

\* Child seat not included.

# SAFETY DELIVERED

**Awarded 4-stars in safety** and equipped with standardized safety features, the new Liva is thoughtfully crafted to ensure that safety never goes out of style.



**STANDARDIZED ABS WITH EBD**

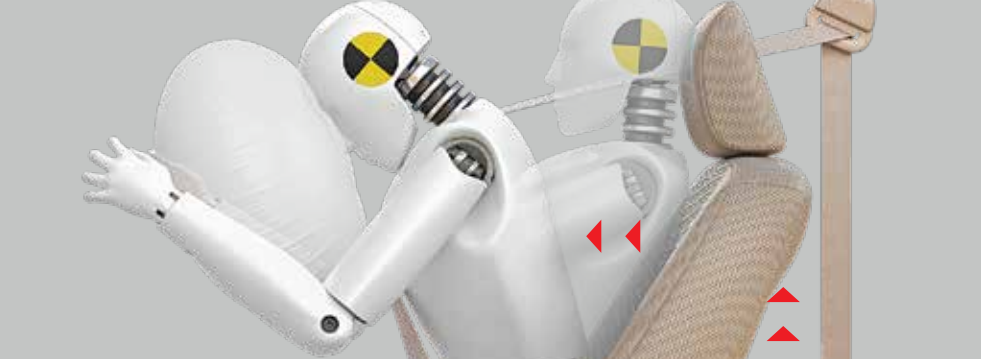
ABS suppresses wheel-locking while braking, allowing better manoeuvrability. EBD optimally distributes braking force for better control based on the load conditions.



**STANDARDIZED DUAL FRONT SRS AIRBAGS\*\***

Highly effective airbags that significantly reduce the impact of a collision for both driver and passenger. A standard feature across all variants.

\*\* For more details on the functioning of airbags please refer to the owner's manual.



**FRONT PRE-TENSIONER FORCE LIMITER SEATBELTS**

Enhances restraint performance and minimizes impact to the chest in case of a collision. Standardized across all variants.



**NEW REAR REMOVABLE HEADRESTS(ALL 3 SEATS)**

Designed to enhance comfort and reduce injuries in case of a rear-end collision. A standard feature across all variants.



**NEW CENTRAL LOCKING SYSTEM**

Smartly placed to allow immediate unlocking of all doors in case of collision.



**REVERSE PARKING SENSORS**

Enables parking in the tightest spaces with ease.



# CRAFTED FOR COMFORT

The new Liva comes loaded with an array of smartly planned features that make for a truly comfortable driving experience.



## NEW OPTITRON COMBIMETER

Digital tachometer and analog speedometer with graphic illumination, displaying information about your drive. Visible at all times, both with the headlamps switched on or off.



## NEW ELECTRICALLY FOLDABLE ORVMS

Electrically Foldable Outside Rear View Mirrors that help navigate tight corners and narrow lanes with just a button.



## BEST-IN-CLASS CABIN SPACE

Best-in-class head, shoulder and knee room ensure the most comfortable journey for all occupants, even for long durations.



## BEST-IN-CLASS AC WITH MULTIDIRECTIONAL VENTS

Ensures the fastest, most effective cooling with 360° unique rotating function.



## BEST-IN-CLASS BOOT SPACE

251ℓ (0.251m<sup>3</sup>) space accommodates large quantity of luggage of all shapes & sizes. And makes loading & unloading easier with lower loading height.



## FOLDABLE REAR SEAT

Creates an open area from the trunk to the passenger compartment for increased cargo-versatility.

## COOLED GLOVE BOX

13ℓ (0.013m<sup>3</sup>) space to keep beverages 10° lesser than the cabin temperature even during long drives.

## HEIGHT ADJUSTABLE DRIVER'S SEAT

Adjustable seating for better driver comfort.

# DEPENDABLE QUALITY

Built to deliver beyond expectations, the new Liva comes assured with uncompromised performance, unbeatable quality and unmatched services.



**LOW COST OF MAINTENANCE**  
Benefit from the most economical maintenance cost of just 0.34p/km.\*

**UNMATCHED WARRANTY\***  
3 years / 1,00,000km  
\* Conditions Apply

**UNMATCHED WARRANTY**  
Best-in-segment warranty of 3 years / 1,00,000 km.\*\*



**EXTENDED WARRANTY**  
Avail up to 7 years / 1,40,000 km based on vehicle usage.\*\*



**POWERFUL 1.4L DIESEL ENGINE**  
Enhanced acceleration with excellent driving performance and mileage.



**REFINED 1.2L DOHC PETROL ENGINE**  
Optimized torque for better driving experience and fuel economy.

\* Cost of scheduled periodic maintenance job upto 1,00,000 km. \*\* Conditions apply.

# VALUE ADDED SERVICES\*

## QUICKSERVICE



Express maintenance within 60 minutes at all Toyota dealerships.

## THE SERVICE SUPERMARKET



**Comprehensive Protection Package**  
Experience hassle-free insurance coverage while ensuring comprehensive protection for your vehicle.



Better endurance, and hence more savings with Toyota genuine parts.



Caters to service needs, including tyre, battery, car spa and beautification, for a pleasant, hassle-free ownership.

## CONVENIENCE



Avail of roadside assistance up to 8 years anywhere, anytime. With free assistance for the first 3 years.



A network of 250+ world-class service centres.



Vehicle pick-up and drop for service, at a location of your convenience.

\* Conditions apply.



# ADDITIONAL BENEFITS

# ACCESSORIZE YOUR LIVA



## TOYOTA UTRUST\*

Exchange your old cars with a Toyota or Non-Toyota car. UTrust provides fair and transparent deals while buying and selling used cars with complete peace of mind and hassle-free transactions. To know more, visit [www.toyotautrust.in](http://www.toyotautrust.in).



Used-car valuation done by professionals.



Fair price based on actual car conditions.



Assured ownership transfer to the right customer.



Full upfront payment on used car & cost adjustment on your new Toyota car.



## TOYOTA FINANCIAL SERVICES\*

A one-stop financial destination with the choicest options for anyone who wants to own a dream Toyota vehicle. To know more, visit [www.toyotafinance.co.in](http://www.toyotafinance.co.in).



### CLASSIC FINANCE

Simple, fixed-rate repayment through EMIs.



### EASY FINANCE

Lower initial EMIs that increase along with your income level.



### FLEXY FINANCE

Lower EMIs with flexibility to pay higher amount at preferred intervals.



### SMART FINANCE

Lower EMIs with an option to pay lump sum amount on loan maturity.

\* Available at select dealerships.



ROOF SPOILER



SIDE VISOR



SIDE PROTECTION MOULD



CAR CUSHION



BELT PAD

# TECHNICAL SPECIFICATIONS

		PETROL		DIESEL	
ENGINE	Type	4 Cylinder 16V, DOHC		4 Cylinder 8V, SOHC, D-4D	
	Size	1197 cm <sup>3</sup> (cc)		1364 cm <sup>3</sup> (cc)	
	Max. Power	59 kW (80PS) @ 5600 rpm		50 kW (68PS) @ 3800 rpm	
	Max. Torque	104 Nm (10.6 kg-m) @ 3100 rpm		170 Nm (17.3 kg-m) @ 1800 - 2400 rpm	
	Fuel Supply System	Electronic Fuel Injection (EFI)		Common Rail Direct Injection (CRDI)	
	Mileage	18.16 km/l *		23.59 km/l *	
TRANSMISSION	Type	5 Speed Manual			
SUSPENSION	Front	MacPherson Strut			
	Rear	Torsion Beam			
BRAKES	Front	Ventilated Disc			
	Rear	Drum			
GRADE		G/GD	G/GD	V/VD	VX/VXD
		-	X	-	-
DIMENSIONS	Overall Length x Width x Height	3.775 m x 1.695 m x 1.510 m	3.884 m x 1.695 m x 1.510 m		
	Wheelbase	2.460 m			
	Fuel Tank Capacity	45 litres (0.045 m <sup>3</sup> )			
	Turning Circle Radius	4.8 m			
	Boot Space	251 litres (0.251 m <sup>3</sup> )			
	Tyre (Tubeless)	175 / 65 R14			185 / 60 R15
EXTERIOR	New Design Front Grille	× (Body Colour)	✓ (Body Colour)		
	Body Coloured Bumpers	✓	✓ (New Design)		
	Front Fog Bezel	×	✓ (Silver)	✓ (Silver)	✓ (Chrome)
	Body Coloured Door Handles	✓	✓	✓	✓
	Body Coloured ORVM	✓	✓	(With Turn Indicator)	
	B Pillar Blackout	×	✓	✓	✓
	Intermittent Wiper	×	✓	✓	✓
	Rear Wiper & Washer	×	×	✓	✓
	Full Wheel Caps	✓	✓	✓	×
	New Sporty Alloy Wheels (4)	×	×	×	✓
COMFORT & CONVENIENCE	Foldable Roof Antenna	×	✓	✓	✓
	Air Conditioner w/ Heater & Clean Air Filter	✓	✓	✓	✓
	Power Windows w/ Driver Side Auto Down	✓	✓	✓	✓
	Electric Power Steering w/ Tilt Function	✓	✓	✓	✓
	Central Locking	×	✓	✓	✓
	Cooled Glove Box	✓	✓	✓	✓
	Front Cabin Lights	✓	✓	✓	✓
	Front Power Outlet (12V)	✓	✓	✓	✓
	Height Adjustable Driver Seat	×	✓	✓	✓
	Tachometer	✓ (Analog)	✓ (Digital)		

\* As certified by Test Agency under Rule 115 of CMVR, 1989 under standard test conditions. The values obtained by users will differ from this value due to infinite variables such as driving habits, road and traffic conditions, fuel quality, maintenance practices, loading pattern, ambient conditions, usual engineering tolerances on components and so on.  
 #Bluetooth is a registered trademark of Bluetooth SIG.

	GRADE	G/GD	G/GD	V/VD	VX/VXD
		-	X	-	-
	Digital Tripmeter	✓	✓	✓	✓
	Fuel Meter LCD Type with Digital Clock	✓	✓	✓	✓
	Audio System w/ Remote	×	×	2 DIN CD MP3/AM/FM, with USB, Aux In, Bluetooth #	
	Speakers	×	2 Nos. Door + 2 Nos. IP		
	Audio Controls on Steering Wheel	×	×	×	✓
	Rear Package Tray	×	×	✓	✓
	Outside Rear View Mirror - Adjustable	Lever Type		Electric	Electric + Retractable
	Dual Tone Interior (Ivory & Black)	×	✓	✓	✓
	Optitron Combimeter with Illumination Control	×	✓	✓	✓
INTERIOR	3D Textured Fabric Seats - Ivory	×	✓	✓	✓
	Seat Back Pocket (D+P)	✓	✓	✓	✓
	Fabric Insert Door Trim	×	×	✓	✓
	3 Spoke Steering Wheel	✓	✓	✓	Sporty Leather Wrapped
	Silver Accent on Steering Wheel	✓	✓	✓	
	7 Bottle Holders (1 litre)	✓	✓	✓	✓
	Front & Rear Door Pockets	✓	✓	✓	✓
	Day / Night Inside Rear View Mirror	✓	✓	✓	✓
	Driver & Passenger Sunvisor	✓	✓	✓ (With Passenger Side Mirror)	
	Chrome Accented Shift Knob	×	×	✓	✓
	Chrome Accented AC Rings	×		×	✓
	Assist Grip w/ Coat Hook	3 Nos.			
	Wood Grain Finish on Door Armrest	×	×	×	✓
	Remote Fuel Lid & Tailgate Opener	✓	✓	✓	✓
	SAFETY & SECURITY	Dual SRS Airbags (D+P)	✓	✓	✓
ABS w/ EBD		✓	✓	✓	✓
Immobiliser		✓	✓	✓	✓
Keyless Entry		×	✓	✓	✓
Front Headrest - Height Adjustable x 2		✓	✓	✓	✓
Rear Headrest - Removable x 3		✓	✓	✓	✓
Front Seat Belt - with Pretensioner & Force Limiter		✓	✓	✓	✓
Rear Seat Belt - 3 Point ELR x 3		✓	✓	✓	✓
Child Restraint System-ISOFIX x 2 & TETHER ANCHOR x 2		✓	✓	✓	✓
Driver Seat Belt Warning (with Buzzer)		✓	✓	✓	✓
Headlamp on Warning (with Buzzer)		✓	✓	✓	✓
Door Ajar Warning (with Buzzer)		✓	✓	✓	✓
Front Fog Lamps		×	×	×	✓
Reverse Sensors		×	×	×	✓
Rear Defogger		×	✓	✓	✓



VERMILION RED



CLASSIC GREY



SILVER MICA METALLIC



HARMONY BEIGE



CELESTIAL BLACK



WHITE

For more info, visit [www.toyotabharat.com](http://www.toyotabharat.com), **Talk to Toyota at 1800-425-0001 (Toll-free) or +91-80-6629-001 (Direct No.).** Note: Vehicles pictured and specifications detailed in this brochure may vary between models and equipment. Addition of extra features may change figures in this chart. TKM (manufacturer) reserves the right to change the design, specifications and colours without prior notice. Actual colour of vehicle body and upholstery might differ slightly from the images depicted in this brochure. Features are grade-specific.

is your Etios Liva dealer