



**SUZUKI**  
**BURGMAN**  
**ETREET**

**THE SPECIAL ONE**

**NOW, EVEN MORE SPECIAL.**



**SUZUKI**  
*at your*  
**Doorstep**

Powered by  
**SEP**  
 SUZUKI ECO PERFORMANCE  
 Ultra light and robust  
 125cc engine

**E20**  
 COMPLIANT

\*Suzuki Ride Connect app is available for Android™ OS and iOS both.



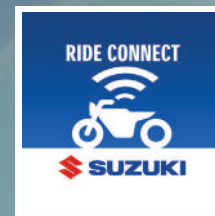
WITH **TURN-BY-TURN**  
 NAVIGATION.



Now both iOS and Android™ OS compatible.

**Now available in New Metallic Matte Titanium Silver.**





## Suzuki Ride Connect\* Edition with Bluetooth® Enabled Digital Console\*\*

Now, reach your destination without any confusion. The Bluetooth® Enabled Digital Console gives you Big and Bold Turn-by-Turn Navigation icons, keeping you on the right route every time.



### Missed Call Alert & Caller ID^^

Get to know who is calling and view missed calls, without even touching the phone, on the Bluetooth® Enabled Digital Console.



### Speed Exceeding Alert

Set a speed limit on your Suzuki Ride Connect app and get an alert whenever you exceed that limit.



### Call, SMS & WhatsApp Alerts

LCD and LED Blinking + Notification display on cluster.



### Phone Battery Level Display

Phone Battery Level Display, so that you never run out of power.



### Turn-by-Turn Navigation

Big and bold Turn-by-Turn Navigation icon display, so that you never go off track from your destination.



### ETA Updates

Estimated Time of Arrival display for never being late to your destination.

^^Missed Call Alert & Caller ID feature is available in Android™ OS only. \*Suzuki Ride Connect app is available for Android™ OS and iOS both. \*\*Bluetooth® Enabled Digital Console is only available in Ride Connect Edition.





**DUAL TONE  
SEAT COLOR\***

To give your vehicle's seat  
an elegant finish.



**DUAL TONE  
INNER LEG SHIELD\***

To give your ride a  
premium look.

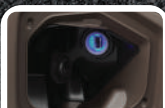
## FEATURES



**BLUETOOTH® ENABLED  
DIGITAL CONSOLE\***



**ENGINE START AND STOP  
SWITCH WITH SUZUKI  
EASY START SYSTEM**



**USB SOCKET\***



**FRONT DISC  
BRAKE**



**LUXURIOUS LED  
HEADLIGHTS AND  
POSITION LIGHTS**



**LED REAR  
COMBINATION  
LIGHT**



**STANDARD BODY  
MOUNT  
WINDSCREEN**



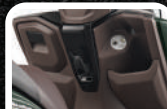
**SPORTY  
MUFFLER  
COVER**



**FLEXIBLE  
FOOT POSITION  
FOR RIDER**



**21.5 L  
UNDER SEAT  
STORAGE**



**2L GLOVE BOX &  
RACK  
FOR STORAGE**



**CONVENIENT  
DUAL LUGGAGE  
HOOKS**



**SHUTTER KEY  
WITH  
CENTRAL SEAT LOCK**



**ALUMINIUM  
PILLION  
FOOTREST**

# E20

## E20 COMPLIANT

As a part of our effort  
towards carbon reduction,  
entire range of Suzuki  
scooters is now E20  
compliant. E20 Fuel type is  
more environmental friendly  
as its usage results in lower  
carbon emission.

## GENUINE ACCESSORIES^



**SIDE STEP**



**ACCESSORY BAR**



**SEAT COVER**

\*Available in Burgman Street Ride Connect Edition.

^DC Socket and Multi-Function Digital Meter available in Burgman Street Standard Edition.





## SUZUKI BURGMAN STREET

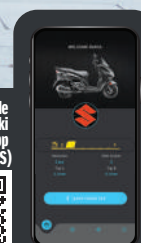
### BURGMAN STREET COLOUR VARIANTS

<b>Standard Edition</b>	<b>NEW</b>	YMC - Metallic Matte Titanium Silver	YWC - Pearl Moon Stone Grey	YKV - Metallic Matte Black No. 2	QU5 - Pearl Matte Shadow Green	YPA - Pearl Mirage White
<b>Ride Connect</b>	<b>NEW</b>	YMC - Metallic Matte Titanium Silver	YUA - Matte Blue	YKV - Metallic Matte Black No. 2	QU5 - Pearl Matte Shadow Green	YPA - Pearl Mirage White

\*Scan this QR code to download Suzuki Ride Connect App (iOS)



\*Scan this QR code to download Suzuki Ride Connect App (Android™ OS)



### UNIQUE APP FEATURES



**Big & Bold  
TBT Navigation Icons**



**Short Distance  
Indicator Bar**



**Last Parked  
Location**

### ENGINE

Type :	4-Stroke, 1-Cylinder, Air-Cooled
Valve System:	SOHC, 2 Valve
Displacement:	124 cm <sup>3</sup>
Bore x Stroke:	52.5 x 57.4 mm
Engine Output:	8.7ps @ 6750 rpm
Torque:	10.0Nm @ 5500 rpm
Fuel System:	Fuel Injection
Starter System:	Kick and Electric
Transmission Type:	CVT

### DIMENSIONS AND WEIGHT

Overall Length:	1,880 mm
Overall Width:	715 mm
Overall Height:	1,140 mm
Wheelbase:	1,265 mm
Ground Clearance:	160 mm
Seat Height:	780 mm
Kerb Mass:	110 kg
Wheels:	Alloy
Fuel Tank:	5.5 L

### BRAKE

Front:	Disc
Rear:	Drum

### SUSPENSION

Front:	Telescopic
Rear:	Swing Arm

### TYRE SIZE

Front:	90/90-12 54J Tubeless
Rear:	90/100-10 53J Tubeless

### ELECTRICAL

Battery:	Maintenance Free 12V, 4Ah
Headlight:	LED

Authorised Dealer

Visit us at: [www.suzukimotorcycle.co.in](http://www.suzukimotorcycle.co.in) [/suzuki2wheelers](https://www.facebook.com/suzuki2wheelers) [/suzuki2wheelers](https://www.youtube.com/suzuki2wheelers) [/suzuki2wheelers](https://www.instagram.com/suzuki2wheelers)

Regd. Office, Sales & Marketing Office: 2nd Floor, Plot No. 1, Nelson Mandela Road, Vasant Kunj, New Delhi - 110 070. Fax: 011-4607 5418.

 Ride safe. Wear a helmet. | Prices of the vehicles are available on our website

Specifications, appearances, equipments, colors, materials and other items of the Suzuki products shown in this leaflet are subject to change by the manufacturers at any time without notice and they may vary depending upon local conditions and requirements. Please visit your local dealer for details of any changes. Actual body colour may differ from the colours in this leaflet. \*Accessories are not a part of standard equipment.

We reserve the right to make changes at any point of time, without prior notice in design, colour, specifications and features of product. All items/products shown above are indicative only and may vary in actual. Colours shown may vary from actual body colour of the product due to printing. Accessories shown in the pictures are not a part of the standard product. For the latest authentic information, kindly contact your nearest Authorized Dealer. \*Suzuki Ride Connect Application is available for Android™ OS Version 6 onwards. Android is a trademark of Google LLC. \*Suzuki Ride Connect application is available for iOS version 12.0 onwards. IOS is a trademark or registered trademark of Cisco in the U.S. and other countries and is used under license. \*\*Missed call alert and caller ID feature is available in Android™ OS only. The Bluetooth® word mark and logos are registered trademarks owned by Bluetooth SIG, Inc. and any use of such marks by Suzuki is under license.

Please scan this QR code to visit our website.



##including 3 Years of optional warranty.

\*\*Extended warranty is offered by the third party.





**CELEBRATE IN STYLE WITH  
OUR STUNNING NEW COLOUR!**



**SUZUKI**  
**BURGMAN**  
**STREET**

**THE SPECIAL ONE**

**NOW, EVEN MORE SPECIAL.**



Powered by  
**SEP**  
SUZUKI ECO PERFORMANCE  
Ultra light and robust  
125cc engine

**E20**  
COMPLIANT



**WITH TURN-BY-TURN  
NAVIGATION**



Now with iOS and Android® OS compatible.

**Now available in Metallic Matte Black No.2**

\*Suzuki Ride Connect Application is available for Android™ OS and iOS both.

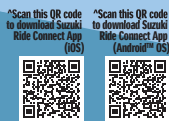
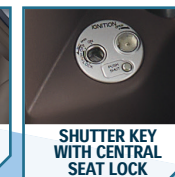
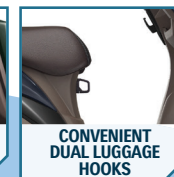
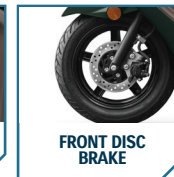


# Suzuki Ride Connect\* Edition with Bluetooth® Enabled Digital Console\*\*

Now, reach your destination without any confusion. The Bluetooth® Enabled Digital Console gives you Big and Bold Turn-by-Turn Navigation icons, keeping you on the right route every time.



## FEATURES



## UNIQUE APP FEATURES

- Big & Bold Turn-by-Turn Navigation Icons
- Short Distance Indicator Bar
- Last Parked Location

## ENGINE

Type :	4-Stroke, 1-Cylinder, Air-Cooled
Valve System:	SOHC, 2 Valve
Displacement:	124 cm <sup>3</sup>
Bore x Stroke:	52.5 x 57.4 mm
Engine Output:	8.7ps @ 6750 rpm
Torque:	10.0Nm @ 5500 rpm
Fuel System:	Fuel Injection
Starter System:	Kick and Electric

Transmission Type: CVT

## DIMENSIONS AND WEIGHT

Overall Length:	1,880 mm
Overall Width:	715 mm
Overall Height:	1,140 mm
Wheelbase:	1,265 mm
Ground Clearance:	160 mm
Seat Height:	780 mm
Kerb Mass:	110 kg
Wheels:	Alloy
Fuel Tank:	5.5 L

## BRAKE

Front:	Disc
Rear:	Drum

## SUSPENSION

Front:	Telescopic
Rear:	Swing Arm

## TYRE SIZE

Front:	90/90-12 54J Tubeless
Rear:	90/100-10 53J Tubeless

## ELECTRICAL

Battery:	Maintenance Free 12V, 4Ah
Headlight:	LED

Authorised Dealer

Visit us at: [www.suzukimotorcycle.co.in](http://www.suzukimotorcycle.co.in) [/Suzuki2wheels](https://www.facebook.com/Suzuki2wheels) [/Suzuki2wheels](https://www.instagram.com/Suzuki2wheels) [/Suzuki2wheels](https://www.youtube.com/Suzuki2wheels) [/Suzuki2wheels](https://www.tiktok.com/Suzuki2wheels)

Regd. Office, Sales & Marketing Office: 2nd Floor, Plot No. 1, Nelson Mandela Road, Vasant Kunj, New Delhi - 110 070. Fax: 011-4607 5418. [Ride safe. Wear a helmet.](#) | Prices of the vehicles are available on our website.

Specifications, appearances, equipments, colours, materials and other items of the Suzuki products shown in this leaflet are subject to change by manufacturers anytime without notice and they may vary depending upon local conditions and requirements. Please visit your local dealer for details of any changes. Actual body colour may differ from the colours in this leaflet. \*Accessories are not a part of the standard equipment.

We reserve the right to make changes at any point of time, without prior notice in design, colour, specifications and features of the product. All items / products shown above are indicative only and may vary in actual. Colours shown may vary from actual body colour of the product due to printing. Accessories shown in the pictures are not a part of the standard product. For the latest authentic information, kindly contact your nearest Authorized Dealer. \*Suzuki Ride Connect Application is available for Android™ OS Version 6 onwards. Android is a trademark of Google LLC. \*Suzuki Ride Connect application is available for iOS version 12.0 onwards. iOS is a trademark or registered trademark of Cisco in the U.S. and other countries and is used under license. \*\*Missed call alert and caller ID feature is available in Android™ OS only. The Bluetooth® word mark and logos are registered trademarks owned by Bluetooth SIG, Inc. and any use of such marks by Suzuki is under license.



### Missed Call Alert & Caller Id

Get to know who is calling and view missed calls, without even touching the phone, on the Bluetooth® Enabled Digital Console.



### ETA Updates

Estimated Time of Arrival display for never being late to your destination.



### Turn-by-Turn Navigation

Big and Bold Turn-by-Turn Navigation icon display, so that you never go off track from your destination.



### Phone Battery Level Display

Phone Battery Level Display, so that you never run out of power.



### Speed Exceeding Alert

Set a speed limit on your Suzuki Ride Connect app and get an alert whenever you exceed that limit.



### Call, SMS & WhatsApp Alert

LCD and LED Blinking + Notification display on cluster.



##Including 3 Years of optional warranty

\*\*\*Extended warranty is offered by the third party.





# SUZUKI **BURGMAN** *STREET EX* **THE SPECIAL ONE** NOW, MORE SPECIAL THAN EVER.

With Suzuki  
Ride Connect\*



**WITH  
TURN-BY-TURN NAVIGATION.**



**SUZUKI**  
at your  
**Doorstep**

Powered by  
**SEP $\alpha$**   
ULTRA LIGHT AND ROBUST  
125cc engine

**ENGINE AUTO  
STOP START**



**E20  
COMPLIANT**

Available at  
Select  
**SUZUKI**  
PREMIUM  
Dealership only

\*Suzuki Ride Connect Application is available for Android™ and iOS both.





#### ENGINE AUTO STOP-START(EASS)

The BURGMAN STREET EX is the first Suzuki motorcycle or scooter to adopt our new EASS Stop-Start system, which automatically shuts down the engine to reduce the amount of time the engine idles and then restarts it when the rider turns the throttle to continue riding. This reduces fuel consumption and emissions, so proves particularly beneficial when stopping for traffic lights or when stuck in stop-and-go traffic.



#### SILENT STARTER SYSTEM

The new Silent Starter System is also the first on a Suzuki Motorcycle or Scooter. It Starts the scooter smoothly and quietly. The system works in conjunction with the idling stop function of EASS to silently restart the engine when the rider turns the throttle to resume riding.



#### 12 INCH REAR WHEEL (30.48CM)

The rear wheel size now becomes 12 inch (30.48cm) with 100/80-12 tyre profile. This enhances the look making it wider, bigger and more luxurious. This larger diameter wheel helps in improving the city riding efficiency like while passing gaps on the road. Front Fork and rear suspension are tuned to the tyres and wheels to achieve a fine balance of stability, road-holding performance, nimble handling and a comfortable ride, even when passing over uneven surfaces.



## E20

#### E20 COMPLIANT

As a part of our effort towards carbon reduction, entire range of Suzuki scooters is now E20 compliant. E20 Fuel type is more environment friendly as its use results in lower carbon emission.



SEP is the development concept behind a new generation of engines proposed by Suzuki that combine both a high level of fuel efficiency and excellent acceleration performance. The new BURGMAN STREET EX further advances this concept by introducing Suzuki Eco Performance Alpha (SEP- $\alpha$ ) engine technology for the first time on a Suzuki scooter or motorcycle. With the addition of Engine Auto Stop-Start (EASS), a new idling stop system, and Suzuki's new Silent Start System, SEP- $\alpha$  distinguishes itself by enhancing the user experience while at the same time achieving a new level of fuel economy and quiet operation.





**Suzuki Ride Connect\*  
Edition with Bluetooth®  
Enabled Digital Console**



**Now, reach your destination without any confusion.  
The big, bold navigation cluster gives you  
Turn-by-Turn directions, keeping you on the right  
route every time.**



#### **Missed Call Alert & Caller ID^^**

Get to know who is calling and view missed calls, without even touching the phone, on the Bluetooth® Enabled Digital Console.



#### **Phone Battery Level Display**

Phone Battery Level Display so that you never run out of power.



#### **Speed Exceeding Alert**

Set a speed limit on your Suzuki Ride Connect app and get an alert whenever you exceed that limit.



#### **Turn-by-Turn Navigation**

Big and Bold Turn-by-Turn Navigation icon display so that you never go off track from your destination.



#### **Call, SMS & WhatsApp Alert**

LCD and LED Blinking + Notification display on cluster.



#### **ETA Updates**

Estimated Time of Arrival display for never being late to your destination.

## **FEATURES**



**USB SOCKET**



**FRONT DISC BRAKE**



**LUXURIOUS LED HEADLIGHTS AND POSITION LIGHTS**



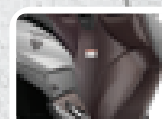
**LED REAR COMBINATION LIGHT**



**COMPACT BODY MOUNT WINDSCREEN**



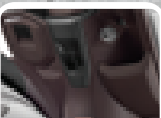
**SPORTY MUFFLER COVER**



**FLEXIBLE FOOT POSITION FOR RIDER**



**21.5 L UNDER SEAT STORAGE**



**2L GLOVE BOX & RACK FOR STORAGE**



**CONVENIENT DUAL LUGGAGE HOOKS**



**SHUTTER KEY WITH CENTRAL SEAT LOCK**



**ALUMINUM PILLION FOOTREST**



**SIDE STAND INTERLOCK**



**DUAL TONE SEAT COLOR**

## **GENUINE ACCESSORIES^**



**REAR FOOTREST SIDE**



**ACCESSORY BAR**



**SEAT COVER**

^Genuine Accessories are not a part of standard equipment. ^^Missed Call Alert & Caller ID feature is available in Android™ OS only.  
\*Suzuki Ride Connect Application is available for Android™ and iOS both.





# SUZUKI

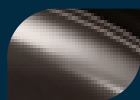
## BURGMAN

### STREET EX

#### BURGMAN STREET EX COLOR VARIANTS



**Metallic Matte Platinum  
Silver No.2 - SAB**



**Metallic Royal  
Bronze - QS4**

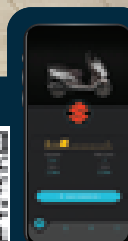


**Metallic Matte  
Black No.2 -  
YKV**

\*Scan this  
QR code to  
download  
Suzuki Ride  
Connect  
Android™  
Application



\*Scan this  
QR code to  
download  
Suzuki Ride  
Connect  
iOS  
Application



#### UNIQUE APP FEATURES



WhatsApp  
Notification



Short Distance  
Indicator Bar



Bold TBT  
Icons

#### ENGINE

Type :	4-Stroke, 1-Cylinder, Air-Cooled
Valve System:	SOHC, 2 Valve
Displacement:	124 cm <sup>3</sup>
Bore x Stroke:	52.5 x 57.4 mm
Engine Output:	8.6ps @ 6 500 rpm
Torque:	10.0Nm @ 5 500 rpm
Fuel System:	Fuel Injection
Starter System:	Kick and Electric
Transmission Type:	CVT

#### DIMENSIONS AND WEIGHT

Overall Length:	1 875 mm
Overall Width:	700 mm
Overall Height:	1 140 mm
Wheelbase:	1 290 mm
Ground Clearance:	160 mm
Seat Height:	780 mm
Kerb Mass:	111 kg
Wheels:	Alloy
Fuel Tank:	5.5 L

#### BRAKE

Front:	Disc
Rear:	Drum

#### SUSPENSION

Front:	Telescopic
Rear:	Swing Arm

#### TYRE SIZE

Front:	90/90-12 54J Tubeless
Rear:	100/80-12 56J Tubeless

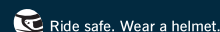
#### ELECTRICAL

Battery:	12V, 6Ah
Headlight:	LED

Authorised Dealer

Visit us at: [www.suzukimotorcycle.co.in](http://www.suzukimotorcycle.co.in) [/suzuki2wheelers](https://www.facebook.com/suzuki2wheelers) [YouTube /suzuki2wheelers](https://www.youtube.com/channel/UCsuzuki2wheelers) [/suzuki2wheelers](https://www.instagram.com/suzuki2wheelers)

**Regd. Office, Sales & Marketing Office:** 2nd Floor, Plot No. 1, Nelson Mandela Road, Vasant Kunj, New Delhi - 110070 CIN - (U74899DL199FTC086871)  
Fax: +91-11-46075418 [www.suzukimotorcycle.in](http://www.suzukimotorcycle.in) | For further information call (Toll-Free): 1800-121-7996 (Mon-Sat from 9:00 am to 6:00 pm)



We reserve the right to make changes at any point of time, without prior notice in design, colour, specifications and features of product. All items/ products shown above may be indicative only and may vary in actual. Colours shown may vary from actually body colour of the product due to printing. Accessories shown in the pictures are not a part of the standard product. For the latest authentic information, kindly contact your nearest Authorized Dealer. \*Suzuki Ride Connect Application is available for Android™ OS Version 6 onwards. Android is a trademark of Google LLC. \*Suzuki ride connect application is available for iOS version 12.0 onwards. IOS is a trademark or registered trademark of Cisco in the U.S. and other countries and is used under license. \*\*Missed call alert and caller ID feature is available in Android™ OS only. The Bluetooth® word mark and logos are registered trademarks owned by Bluetooth SIG, Inc. and any use of such marks by Suzuki is under license. ^Genuine Accessories are not a part of standard equipment.

Please scan  
this QR code  
to visit  
our website



##Including 3 Years  
optional warranty.

\*\*\*Extended warranty is offered by third party.