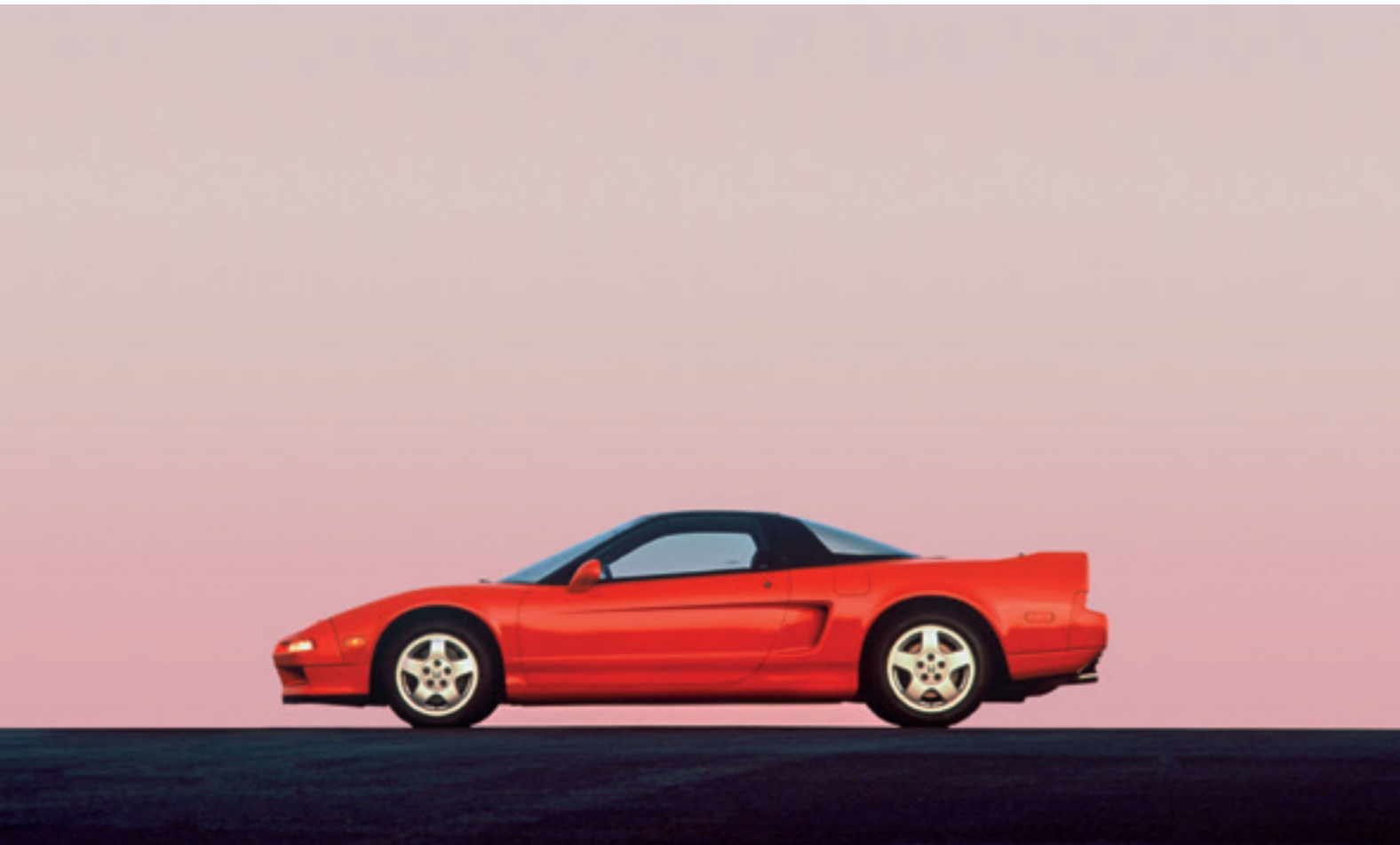


NSX

NSX



A DIFFERENT BREED IN EVERY SENSE

What defines a supercar? Some say speed. Some say beauty. Others say it's all about the sound of the engine.

But why can't it be all of those things?

This is the question we asked ourselves when we designed the original NSX in 1990, a car designed to stir the soul and seen by many as the dawn of a new era for supercars. It was also the challenge we set ourselves when designing the new one – to create a supercar like no other: a New Sports eXperience.





“The process we used to design and develop the new NSX was directly inspired by that of the original. This was because we wanted to keep the purity and function-inspired form, and deliver a truly unique and exhilarating driving experience.”

MICHELLE CHRISTENSEN

Exterior Design Project Leader

Our revolutionary multi-material, lightweight space frame not only delivers class-leading body rigidity, but instantly transmits the full feeling of the power unit, suspension and steering directly to the driver.





"The value of life can be measured by
how many times your soul has been
deeply stirred."

SOICHIRO HONDA

Founder of Honda Motor Co.

The NSX's innovative sport hybrid power unit, with an all-new twin-turbocharged 3.5 litre V6 engine, augmented by three electric motors, unleashes over 570PS with instantaneous torque. A nine-speed dual clutch transmission (DCT) provides smooth and immediate throttle response and ensures the best possible efficiency at any speed.







Quiet Mode

Quiet Mode prioritises the car's electric motor and when it needs assistance from the petrol engine, the revs are kept low so everything is done with a gentle hush. Now you can enjoy peace and quiet where you'd least expect it.



Sport Mode

Sport Mode knows the importance of acceleration, but also of driving efficiently. So it ensures the electric motors and petrol engine work in unison with calm, understated confidence. Just relax and enjoy the ride.



Track Mode

Track Mode helps you find your inner racing driver. Every aspect of the car becomes focused on response, power and giving the road everything it's got.



Sport+ Mode

Sport+ Mode unleashes the power of the NSX at every opportunity. It's mission: to teach every bend, hairpin, corner and chicane a lesson, without wasting a second doing so.





“The interior of the NSX is highlighted by what we call ‘Interwoven Dynamic’ design. It combines the best attributes of intuitive, easy-to-use functionality and superior ergonomics with a clean and modern design aesthetic worthy of a next-generation supercar. It’s the ultimate testimony to the beautiful simplicity of form following function.”

MICHAEL CAO

Interior Project Leader

Sitting behind the wheel of the NSX, you feel cocooned by outstanding comfort and ergonomics. Every detail feels like it has been designed to enhance your experience.





**“It’s like finding your perfect
dance partner.”**

TED KLAUS

Chief Engineer and Global
Development Leader

As part of the NSX’s Advanced Sports Package, placement of key powertrain components are optimised to concentrate vehicle mass low and towards the centre. The ultra-rigid chassis, fully independent suspension and mid-engine layout allow for maximum dynamic handling.





BERLINA BLACK



CURVA RED



130R WHITE



SOURCE SILVER METALLIC



CASINO WHITE PEARL



INDIE YELLOW PEARL II



THERMAL ORANGE PEARL



NOUVELLE BLUE PEARL



VALENCIA RED PEARL



EXCLUSIVE INTERWOVEN WHEEL - POLISHED



EXCLUSIVE INTERWOVEN WHEEL - PAINTED



ORANGE BRAKE CALLIPERS



EXCLUSIVE INTERWOVEN WHEEL - MACHINED



RED BRAKE CALLIPERS



BLACK BRAKE CALLIPERS



**EBONY: MILANO LEATHER & ALCANTARA
MANUAL SPORT SEATS**



**BLUE: SEMI-ANILINE LEATHER & ALCANTARA
HEATED POWER SPORT SEATS**



**EBONY: SEMI-ANILINE FULL LEATHER
HEATED POWER SPORT SEATS**



**EBONY: SEMI-ANILINE LEATHER & ALCANTARA
HEATED POWER SPORT SEATS**



**RED: SEMI-ANILINE LEATHER & ALCANTARA
HEATED POWER SPORT SEATS**



**RED: SEMI-ANILINE FULL LEATHER
HEATED POWER SPORT SEATS**



**SADDLE: SEMI-ANILINE LEATHER & ALCANTARA
HEATED POWER SPORT SEATS**



**ORCHID: SEMI-ANILINE LEATHER & ALCANTARA
HEATED POWER SPORT SEATS**



FRONT SPOILER



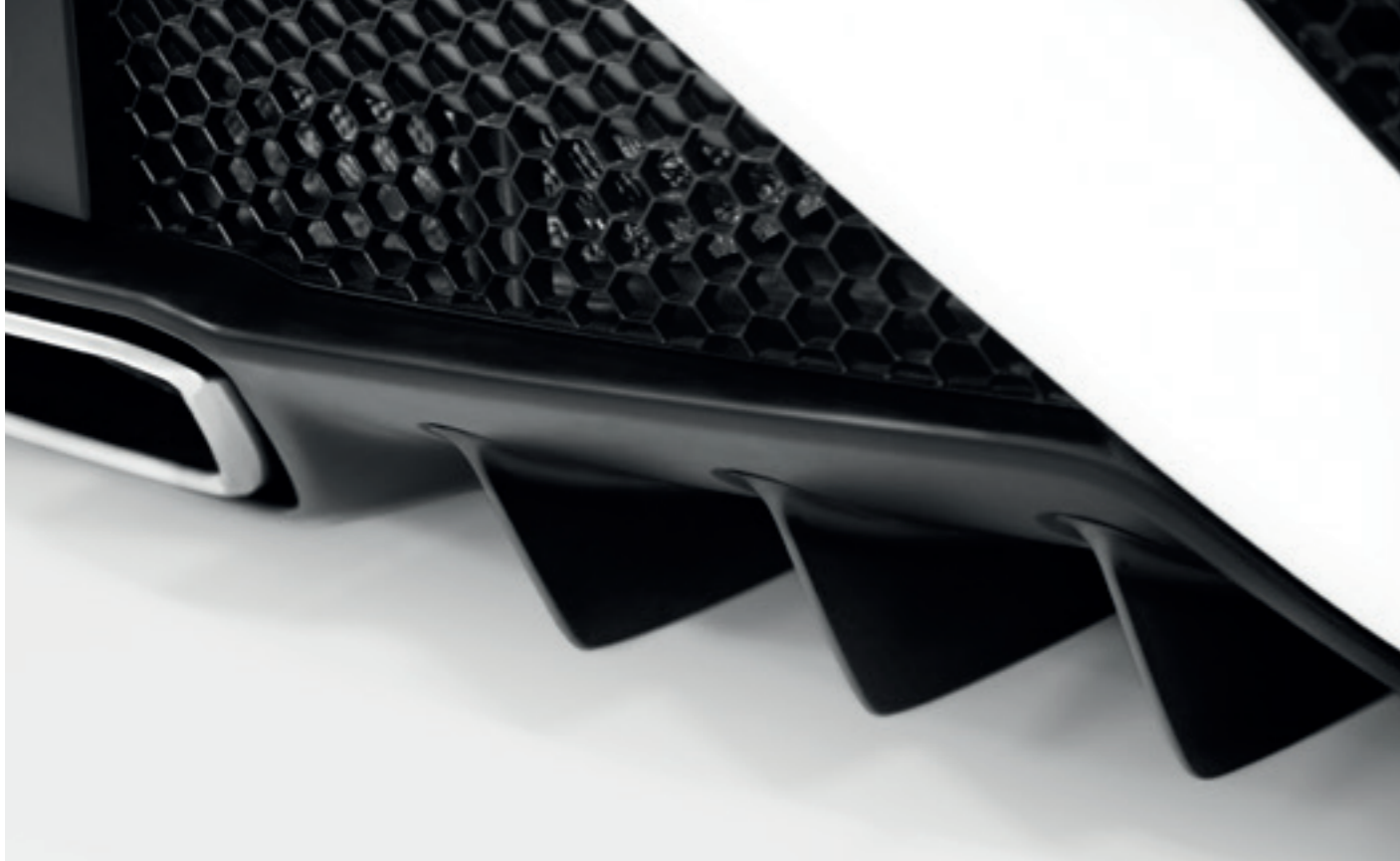
SIDE SILL



CARBON FIBRE FRONT SPOILER



CARBON FIBRE SIDE SILL



REAR DIFFUSER & EXHAUST FINISHER



CARBON FIBRE REAR DIFFUSER & DARK CHROME EXHAUST FINISHER

EXTERIOR SPORT PACKAGE

CARBON FIBRE EXTERIOR SPORT PACKAGE



LEATHER-WRAPPED STEERING WHEEL



PEDALS



CARBON FIBRE STEERING WHEEL GARNISH



ALUMINIUM SPORT PEDALS



ALCANTARA METER VISOR



CARBON FIBRE METER VISOR

SIGNATURE INTERIOR SPORT PACKAGE

CARBON FIBRE INTERIOR SPORT PACKAGE

TECHNICAL SPECIFICATION

OVERVIEW	
Body Type	2dr Coupé
Engine	V6 Twin Turbo 3.5L DOHC
Driven Wheels	E-AWD
Transmission Type	9EDCT
POWER UNIT	
Sport Hybrid SH-AWD Power Unit	Front wheels: mechanically independent from rear power unit components, two electric motors (Twin Motor Unit); Rear wheels: twin-turbocharged V-6 petrol engine with one Direct Drive Motor & 9-speed Dual Clutch Transmission
Maximum Total System Power (PS)	581
Maximum Total System Torque (Nm @ rpm)	645 @ 2000-6000
ENGINE	
Engine Type	Hybrid
Displacement (cc)	3493
Bore x Stroke (mm)	91.0 x 89.5
Compression Ratio	10:1
Valve Train	24 valve, IN/EX VTC, chain-driven camshafts
Maximum rpm	7500
Fuel Required	UNLEADED(98)
Cylinder Bank Angle	75 degrees
Fuel Injection	Direct & port injection
Engine Maximum Power (kW @ rpm)	373 @ 6500-7500
Engine Maximum Power (PS @ rpm)	507 @ 6500-7500
Engine Maximum Torque (Nm @ rpm)	550 @ 2000-6000
Maximum Speed mph (kph)	191 (308)
TWIN TURBO CHARGERS	
Type	Single scroll
Maximum Boost Pressure	105 kPa (1.05 bar) (15.23 psi)
Wastegate Control	Electrical
REAR DRIVE MOTOR	
Type	Water-cooled motor/generator
Layout	Direct drive situated between engine & transmission; Crankshaft output shaft-attached permanent magnet disc & in-engine body-copper windings
PS @ rpm	48 @ 3000
Torque @ rpm (Nm)	147 @ 500-2000

FRONT TWIN MOTOR UNIT (TMU)	
Type	Twin traction motor/generator
Layout	Independent twin motors
PS @ rpm	37 + 37 @ 4000
Torque @ rpm (Nm)	73 + 73 @ 0-2000
TRANSMISSION	
Transmission Type	9EDCT
Gear Ratio 1st	3.838
Gear Ratio 2nd	2.433
Gear Ratio 3rd	1.777
Gear Ratio 4th	1.427
Gear Ratio 5th	1.211
Gear Ratio 6th	1.038
Gear Ratio 7th	0.880
Gear Ratio 8th	0.747
Gear Ratio 9th	0.633
Reverse	2.394
Rear Axle Ratio	3.583
Limited Slip Differential - Wet Multi Plate	•
BODY/SUSPENSION	
Chassis Type - Aluminium - intensive multi material	•
Body Panels - Composite	•
Front Suspension Type - Double-wishbone, double joint lower control arm; aluminium construction	•
Rear Suspension Type - Multi-link; aluminium construction	•
Front Dampers - Magnetorheological coilover assemblies	•
Rear Dampers - Magnetorheological coilovers	•
FUEL ECONOMY & EMISSIONS – NEW EUROPEAN DRIVING CYCLE (NEDC)†	
Urban FC (l/100km)	9.8
Extra Urban FC (l/100km)	10.1
Combined FC (l/100km)	10
Range CO ₂ (g/km)	224 - 231
FUEL ECONOMY & EMISSIONS - WORLDWIDE HARMONISED LIGHT VEHICLE TEST PROCEDURE (WLTP)†	
Range FC (l/100km)	9.2 - 13.1
Combined FC (l/100km)	10.7
Range CO ₂ (g/km)	209 - 297

DIMENSIONS	
Overall Length (mm)	4487
Overall Width (mm)	1939
Overall Width including Door Mirrors (mm)	2217
Overall Height - Unladen (mm)	1204
Wheelbase (mm)	2630
Tread Front (mm)	1659
Tread Rear (mm)	1620
Ground Clearance - with Driver (mm)	104
Max. Seating Capacity (persons)	2
Turning Circle - At Body (m)	12.1
Steering Wheel Lock to Lock (wheel turns)	1.91
Overhang Front Including Bumper (mm)	1002
Overhang Rear Including Bumper (mm)	855
Turning Radius - At Body (m)	6.23
WEIGHT	
Kerb Weight (Kg)	1776 - 1814
Maximum Permissible Weight (Kg)	2040
Weight Distribution (front/rear without options)	42% / 58%
CAPACITY	
Boot Capacity (litres) (Behind rear engine compartment)	110
Fuel Tank (litres)	59
SAFETY	
Single-Stage Driver Airbags	•
Dual-Stage Passenger Airbags	•
Multiple-Threshold Front Airbags (SRS)	•
SmartVent® Front Side Airbags	•
Driver's Knee Airbag	•
Side Curtain Airbags	•
Pop Up Bonnet	•
3-Point Seat Belts with Automatic Tensioning System	•
Driver's & Passenger's Seat-Belt Reminder	•
Vehicle Stability Assist™ with Traction Control	•
Electronic Parking Brake with Brake Hold	•

SAFETY Contd	
Anti-Lock Braking System (ABS)	•
Brake Assist	•
Electronic Brake Distribution	•
Front Brake Callipers (Brembo 6 - piston Aluminium monobloc)	•
Rear Brake Callipers (Brembo 4 - piston Aluminium monobloc)	•
A: Front Brake Disc Type two piece Floating Iron Discs w/ Aluminium centre	•
B: Rear Brake Disc Type two piece Floating Iron Discs w/ Aluminium centre	•
A: Front Brake Disc Type two piece Floating Carbon Ceramic Discs w/ Aluminium centre	•
B: Rear Brake Disc Type two piece Floating Carbon Ceramic Discs w/ Aluminium centre	•
Steering Type - Variable ratio rack & pinion; Dual-pinion Electronic Power Steering	•
Steering Wheel Turns, Lock-to-Lock	1.91
Tyre Pressure Monitoring System (TPMS) with Location & Pressure Indicators	•
SECURITY	
Immobiliser System	•
Security Alarm System	•
Ultrasonic Sensor	•
Smart Entry & Start	•
EXTERIOR	
Radio Antenna - Integrated front windshield type (FM & DAB)	•
Carbon Fibre Roof	•
Door Mirrors (body-coloured upper & lower black) power heated with reverse auto tilt-down & integrated LED turn indicators	•
Rear Spoiler	◦
Flush-Mounted Door Handles	◦
NSX Carbon Fibre Engine Cover	◦
NSX Engine Cover	•
Carbon Fibre Rear Spoiler	◦
Exterior Special Andaro® Colour (Nouvelle Blue Pearl, Valencia Red Pearl)	◦
Exterior Metallic and Pearlescent Colour (Source Silver Metallic, Casino White Pearl, Thermal Orange Pearl)	◦
Exterior Solid Colour (130R White, Curva Red, Berlina Black)	•
Exterior Sport Package (Front Spoiler, Rear Diffuser, Exhaust Finisher, Side Sill)	•

EXTERIOR Contd	
Carbon Fibre Exterior Sport Package (Front Spoiler, Rear Decklid Spoiler, Side Sills, Rear Diffuser, Dark Chrome Exhaust Finisher)	◦
LED Headlights (Low & High Beam)	•
LED Indicators	•
LED Daytime Running Lights	•
Headlight Auto On/Off Timer (Coming Home/Leaving Home Function)	•
WHEELS	
Front Wheels	19x8J Forged Aluminium (Painted / Polished / Machined)
Front Tyres	245/35ZR19 93Y
Rear Wheels	20x11J Forged Aluminium (Polished / Painted / Machined)
Rear Tyres	305/30ZR20 103Y
Iron Disc (Black Calliper)	◦
Carbon Ceramic Brake Discs (Orange Callipers / Black Callipers / Red Callipers)	◦
Tyre Repair Kit	•
INTERIOR	
Seats - Manual Adjustment	•
Seats - 4-Way Power Adjusters	◦
Alcantara Headliner	◦
Black Cloth Headliner	•
Floor Mats	•
Signature Interior Sport Package (Leather-Wrapped Steering Wheel, Pedals & Alcantara Meter Visor)	•
Carbon Fibre Interior Sport Package (Carbon Fibre Meter Visor, Steering Wheel Garnish & Black Alcantara Headliner, Aluminium Footrest & Sport Pedals)	◦
Boot Light	•
Glove Box Light	•
Courtesy Light	•
FUNCTION & TECHNOLOGY	
Integrated Dynamics System: Quiet Mode / Sport Mode / Sport+ Mode / Track Mode	•
4.2" Colour TFT Screen	•
Average Fuel Economy Indicator	•
Instant Fuel Economy Indicator	•
Gear Position Indicator	•
Distance to Empty Indicator	•
Odometer & Trip Meters (2)	•

FUNCTION & TECHNOLOGY Contd	
Exterior Temperature Indicator	•
Paddle Shift	•
COMFORT & CONVENIENCE	
Dual - Zone Automatic Climate Control System	•
Cruise Control	•
Rain Sensing Auto Wipers	•
Dusk Sensing Auto Lights	•
Frameless Auto Dim Rear View Mirror	•
Rear View Camera (wide type)	•
Reverse Auto Tilt Mirror	•
Power Windows with Auto-Up/Down	•
Capless Refuelling	•
Power Remote Fuel Filler Door Release	•
Rear Engine Compartment Window Defroster w/ Timer	•
Tilt & Telescopic Steering Wheel (manual)	•
Active Noise Control	•
Electric Adjustable & Heated Door Mirrors	•
12-Volt Power Outlet	•
Highbeam Support System	•
2 removable cup holders	•
Power Seat (Performance)	◦
Power Seat (full leather)	◦
AUDIO & COMMUNICATIONS	
Honda CONNECT* (with CarPlay & Android Auto™: 7" touchscreen, AM/FM/DAB, internet radio)	•
Honda CONNECT* (with GARMIN Navigation & CD player & parking sensors, 7" touchscreen, AM/FM/DAB)	◦
USB Audio Interface (1) 1.0 Amp charge capability & USB connection without CarPlay & Android Auto™ connectivity	•
USB Audio Interface (2) 1.5 Amp charge capability & USB connection with CarPlay & Android Auto™ connectivity	•
ELS Studio® Premium Audio system: 9 speakers, including subwoofer	•
Steering Wheel Remote Audio Controls	•
Bluetooth™ Hands Free Telephone (HFT)**	•
Bluetooth™ Streaming Audio**	•
HDMI Interface (rear console)	•
Navigation & Parking Sensors	◦

• Standard ◦ Optional

†Fuel consumption figures, sourced from EU regulated laboratory test results, are provided for comparison purposes and may not reflect real-life driving experience. The Honda NSX has been subjected to the new WLTP CO₂ and fuel consumption testing cycle in accordance with Commission Regulation (EU) 2017/1151. WLTP figures better reflect the actual performance of the vehicle when driven on the road. During the transition phase between NEDC (the former testing regime) and WLTP, NEDC values for CO₂ and fuel consumption will remain available in accordance with Commission Regulation (EU) 2017/1153.

All images for visual reference purposes only.

*Connectivity for Aha™ app (including internet radio) & for internet browsing is through Wi-Fi tethering or mobile Wi-Fi Router. Data usage & roaming charges may result from using applications on Honda CONNECT. We recommend you check your mobile phone subscribed package. Internet browsing function can only be used when the car is stationary. Only iPhone 5 or newer versions with iOS 8.4 or later are compatible with Apple CarPlay. To use Android Auto™, you need to download the Android Auto app from Google Play to your smartphone. Only Android 5.0 (Lollipop) or later versions are compatible with Android Auto. Apple CarPlay is a trademark of Apple Inc., registered in the U.S. and other countries.

**Please ask your dealer for a list of compatible Bluetooth™ phones, pairing procedures & special feature compatibilities.





These specification details do not apply to any particular product which is supplied or offered for sale. The manufacturers reserve the right to vary their specifications, including colours, with or without notice and at such times in such manner as they think fit. Major as well as minor changes may be involved. Every effort, however, is made to ensure the accuracy of the particulars contained in this brochure. This publication shall not constitute in any circumstances whatsoever an offer by the Company to any person. All sales are made by the Distributor or Dealer concerned subject to and with the benefit of the standard Conditions of Sale and Warranty given by the Distributor or Dealer, copies of which may be obtained from them on request. This publicity material applies to the UK only Trade Descriptions Act (1968). Whilst efforts are made to ensure specification accuracy, brochures are prepared and printed several months in advance of distribution and consequently cannot always immediately reflect either changes in specification or in some isolated cases the provision of a particular feature. Customers are always advised to discuss specification details with the supplying Dealer especially if your model selection is dependent upon one of the features advertised.

INSERT MARKET ADDRESS



Honda sources paper responsibly from manufacturers within the EU. Please don't bin me, pass me onto a friend or recycle me.